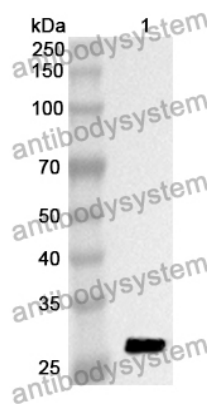


Anti-PLA2G6 Polyclonal Antibody

Summary

Catalog No.	PHA99101
Host species	Rabbit
Tested applications	ELISA: 1:4000-1:8000, IHC: 1:50-1:100, WB: 1:1000-1:4000
Species reactivity	Human, Mouse, Rat
Immunogen	E. coli - derived recombinant Human PLA2G6 (Asp484-Val701).
Form	Liquid
Storage buffer	0.01M PBS, pH 7.4, 50% Glycerol, 0.05% Proclin 300.
Clonality	Polyclonal
Isotype	IgG
Applications	ELISA, IHC, WB
Target	Patatin-like phospholipase domain-containing protein 9, Group VI phospholipase A2, iPLA2-beta, PLA2G6, PLPLA9, Intracellular membrane-associated calcium-independent phospholipase A2 beta, GVI PLA2, CaI-PLA2, Palmitoyl-CoA hydrolase, 2-lysophosphatidylcholine acylhydrolase, 85/88 kDa calcium-independent phospholipase A2, PNPLA9
Purification	Purified by antigen affinity column.
Accession	O60733
Stability and Storage	Use a manual defrost freezer and avoid repeated freeze thaw cycles. Store at 2 to 8°C for frequent use. Store at -20 to -80°C for twelve months from the date of receipt.
Note	For research use only.

Data Image



Western Blot

Recombinant Protein lysates were subjected to SDS PAGE followed by western blot with PLA2G6 antibody (PHA99101) at 1 μ g/ml.

Lane 1: Recombinant protein

Second Ab: Goat Anti-Rabbit IgG H&L Polyclonal antibody, HRP (PTB96431) at 0.1 μ g/mL.

Predict MW: 27 kDa

Observed MW: 27 kDa