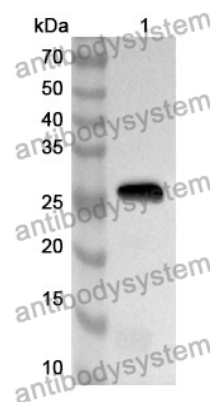


Anti-Human CYP1A2 Polyclonal Antibody

Summary

Catalog No.	PHC15101
Host species	Rabbit
Tested applications	ELISA: 1:4000-1:8000, IHC: 1:50-1:100, WB: 1:1000-1:4000
Species reactivity	Human
Immunogen	E. coli - derived recombinant Human CYP1A2 (Ala2-Ser231).
Form	Liquid
Storage buffer	0.01M PBS, pH 7.4, 50% Glycerol, 0.05% Proclin 300.
Clonality	Polyclonal
Isotype	IgG
Applications	ELISA, IHC, WB
Target	Hydroperoxy icosatetraenoate dehydratase, Cytochrome P450-P3, Cytochrome P450 4, CYP1A2, Cholesterol 25-hydroxylase, CYP1A2, Cytochrome P(3)450, Cytochrome P450 1A2
Purification	Purified by antigen affinity column.
Accession	P05177
Stability and Storage	Use a manual defrost freezer and avoid repeated freeze thaw cycles. Store at 2 to 8°C for frequent use. Store at -20 to -80°C for twelve months from the date of receipt.
Note	For research use only.

Data Image



Western Blot

Recombinant Protein lysates were subjected to SDS PAGE followed by western blot with CYP1A2 antibody (PHC15101) at 1 μ g/ml.

Lane 1: Recombinant protein

Second Ab: Goat Anti-Rabbit IgG H&L Polyclonal antibody, HRP (PTB96431) at 0.1 μ g/mL.

Predict MW: 27 kDa

Observed MW: 27 kDa