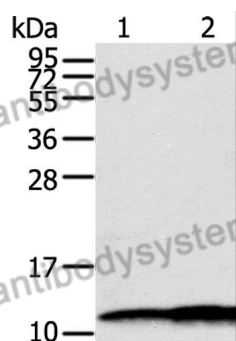


Anti-S100A11 Polyclonal Antibody

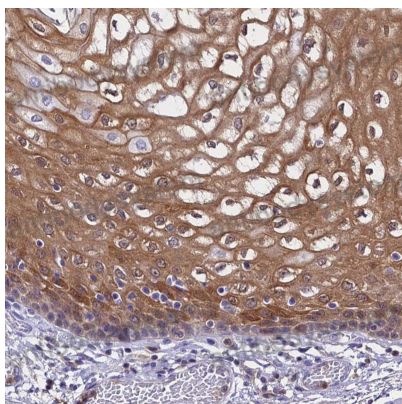
Summary

Catalog No.	PHD97801
Host species	Rabbit
Tested applications	ELISA: 1:4000-1:8000, IHC: 1:50-1:100, WB: 1:1000-1:4000
Species reactivity	Human, Mouse, Rat
Immunogen	E. coli - derived recombinant Human S100A11 (Met1-Thr105).
Form	Liquid
Storage buffer	0.01M PBS, pH 7.4, 50% Glycerol, 0.05% Proclin 300.
Clonality	Polyclonal
Isotype	IgG
Applications	ELISA, IHC, WB
Target	MLN70, Calgizzarin, S100C, MLN 70, Protein S100-C, S100A11, S100 calcium-binding protein A11, Protein S100-A11, Metastatic lymph node gene 70 protein
Purification	Purified by antigen affinity column.
Accession	P31949
Stability and Storage	Use a manual defrost freezer and avoid repeated freeze thaw cycles. Store at 2 to 8°C for frequent use. Store at -20 to -80°C for twelve months from the date of receipt.
Note	For research use only.

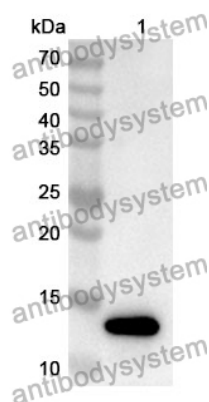
Data Image



Western Blot



Immunohistochemical



Western Blot

Various lysates were subjected to SDS PAGE followed by western blot with S100A11 antibody (PHD97801) at 1 µg/ml.

Lane 1: HepG2

Lane 2: A549

Second Ab: Goat Anti-Rabbit IgG H&L Polyclonal antibody, HRP (PTB96431) at 0.1 µg/mL.

Predict MW: 12 kDa

Observed MW: 12 kDa

Immunohistochemical analysis of human esophagus stained for S100A11 with PHD97801.

Recombinant Protein lysates were subjected to SDS PAGE followed by western blot with S100A11 antibody (PHD97801) at 1 µg/ml.

Lane 1: Recombinant protein

Second Ab: Goat Anti-Rabbit IgG H&L Polyclonal antibody, HRP (PTB96431) at 0.1 µg/mL.

Predict MW: 14 kDa

Observed MW: 14 kDa