

Anti-STIP1 Polyclonal Antibody

Summary

Catalog No.	PHD97701
Host species	Rabbit
Tested applications	ELISA: 1:4000-1:8000, IHC: 1:50-1:100, WB: 1:1000-1:4000
Species reactivity	Human, Mouse, Rat
Immunogen	E. coli - derived recombinant Human STIP1 (Met1-Lys169).
Form	Liquid
Storage buffer	0.01M PBS, pH 7.4, 50% Glycerol, 0.05% Proclin 300.
Clonality	Polyclonal
Isotype	IgG
Applications	ELISA, IHC, WB
Target	Hop,Transformation-sensitive protein IEF SSP 3521,Hsc70/Hsp90-organizing protein,Renal carcinoma antigen NY-REN-11,Stress-induced-phosphoprotein 1,STI1,STIP1
Purification	Purified by antigen affinity column.
Accession	P31948
Stability and Storage	Use a manual defrost freezer and avoid repeated freeze thaw cycles. Store at 2 to 8°C for frequent use. Store at -20 to -80°C for twelve months from the date of receipt.
Note	For research use only.

Data Image

Various lysates were subjected to SDS PAGE followed by western blot with STIP1 antibody (PHD97701) at 1 μ g/ml.



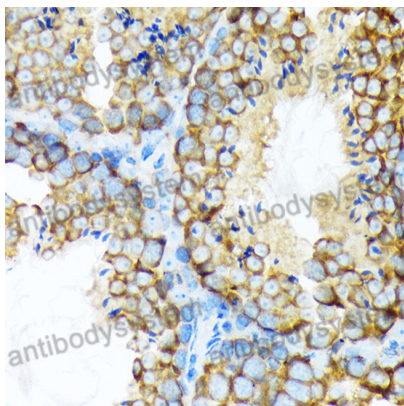
Western Blot

Lane 1: BXP3 cell lysate
Lane 2: SKOV3 cell lysate
Lane 3: Jurkat cell lysate
Lane 4: HepG2 cell lysate
Lane 5: Lncap cell lysate
Lane 6: Jurkat cell lysate
Lane 7: K562 cell lysate
Lane 8: NIH3T3 cell lysate

Second Ab: Goat Anti-Rabbit IgG H&L Polyclonal antibody, HRP (PTB96431) at 0.1 μ g/mL.

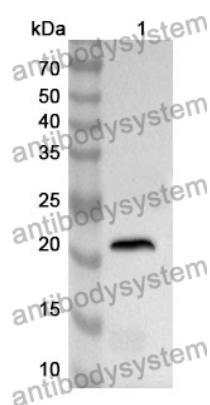
Predict MW: 63 kDa

Observed MW: 63 kDa



Immunohistochemical

Immunohistochemical analysis of mouse testis stained for STIP1 with PHD97701.



Western Blot

Recombinant Protein lysates were subjected to SDS PAGE followed by western blot with STIP1 antibody (PHD97701) at 1 μ g/ml.

Lane 1: Recombinant Protein

Second Ab: Goat Anti-Rabbit IgG H&L Polyclonal antibody, HRP (PTB96431) at 0.1 μ g/mL.

Predict MW: 22 kDa

Observed MW: 22 kDa