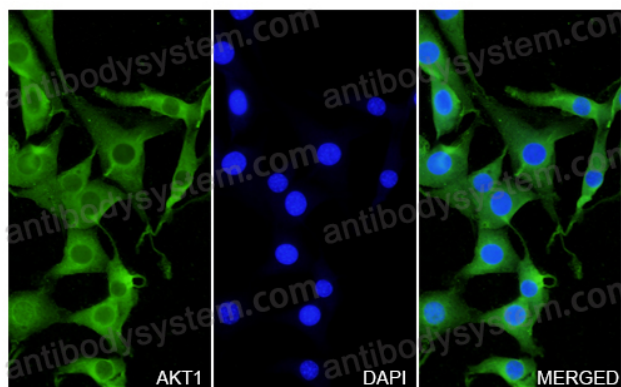


Anti-AKT1 Polyclonal Antibody

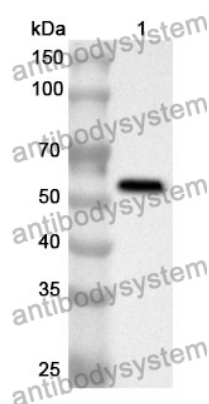
Summary

Catalog No.	PHD96501
Host species	Rabbit
Tested applications	ELISA: 1:4000-1:8000, IHC: 1:50-1:100, WB: 1:500-1:4000
Species reactivity	Human, Mouse, Rat
Immunogen	E. coli - derived recombinant Human AKT1 (Met1-Ala480).
Form	Liquid
Storage buffer	0.01M PBS, pH 7.4, 50% Glycerol, 0.05% Proclin 300.
Concentration	0.58 mg/ml
Clonality	Polyclonal
Isotype	IgG
Applications	ELISA, IHC, WB
Target	RAC-alpha serine/threonine-protein kinase,RAC,RAC-PK-alpha,PKB alpha,Proto-oncogene c-Akt,Protein kinase B alpha,Protein kinase B,AKT1,PKB
Purification	Purified by antigen affinity column.
Accession	P31749
Stability and Storage	Use a manual defrost freezer and avoid repeated freeze thaw cycles. Store at 2 to 8°C for frequent use. Store at -20 to -80°C for twelve months from the date of receipt.
Note	For research use only.

Data Image



Immunocytochemistry/ Immunofluorescence



Western Blot

AKT1 in NIH3T3 Cell Line.

The NIH3T3 cells were fixed with 4% paraformaldehyde (20 min), and then blocked with 5% goat serum for 1h. And the cells were incubated for 2h at 37°C with AKT1 (PHD96501) at 11.6 µg/ml. The section was then incubated with Goat Anti-Rabbit IgG (Alexa Fluor-488) preabsorbed at 1/100 dilution (Shown in green) for 1 hour at room temperature. Nuclear DNA was labelled with DAPI (shown in blue).

Recombinant Protein lysates were subjected to SDS PAGE followed by western blot with AKT1 antibody (PHD96501) at 1 µg/ml.

Lane 1: Recombinant protein

Second Ab: Goat Anti-Rabbit IgG H&L Polyclonal antibody, HRP (PTB96431) at 0.1 µg/mL.

Predict MW: 58 kDa

Observed MW: 58 kDa