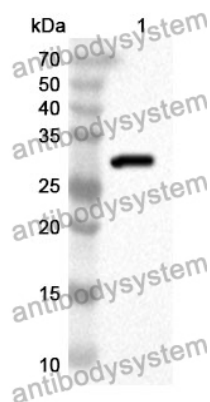


Anti-BMX Polyclonal Antibody

Summary

Catalog No.	PHE88101
Host species	Rabbit
Tested applications	ELISA: 1:4000-1:8000, IHC: 1:50-1:100, WB: 1:1000-1:4000
Species reactivity	Human, Mouse
Immunogen	E. coli - derived recombinant Human BMX (Glu287-Gly523).
Form	Liquid
Storage buffer	0.01M PBS, pH 7.4, 50% Glycerol, 0.05% Proclin 300.
Clonality	Polyclonal
Isotype	IgG
Applications	ELISA, IHC, WB
Target	BMX, Epithelial and endothelial tyrosine kinase, Cytoplasmic tyrosine-protein kinase BMX, ETK, Bone marrow tyrosine kinase gene in chromosome X protein, NTK38
Purification	Purified by antigen affinity column.
Accession	P51813
Stability and Storage	Use a manual defrost freezer and avoid repeated freeze thaw cycles. Store at 2 to 8°C for frequent use. Store at -20 to -80°C for twelve months from the date of receipt.
Note	For research use only.

Data Image



Western Blot

Recombinant Protein lysates were subjected to SDS PAGE followed by western blot with BMX antibody (PHE88101) at 1 μ g/ml.

Lane 1: Recombinant protein

Second Ab: Goat Anti-Rabbit IgG H&L Polyclonal antibody, HRP (PTB96431) at 0.1 μ g/mL.

Predict MW: 29 kDa

Observed MW: 29 kDa