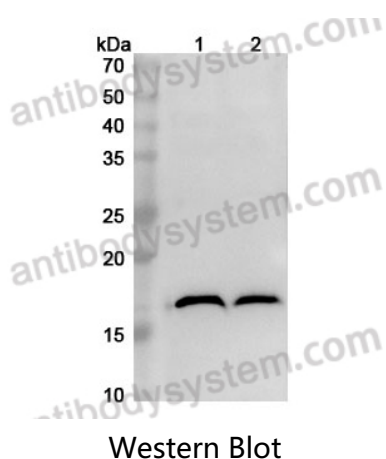


Anti-MAP1LC3A Polyclonal Antibody

Summary

Catalog No.	PHJ56801
Host species	Rabbit
Tested applications	ELISA: 1:4000-1:8000, IHC: 1:50-1:100, IF: 1:50-1:100, WB: 1:1000-1:4000
Species reactivity	Human, Mouse, Rat
Immunogen	E. coli - derived recombinant Human MAP1LC3A (Met1-Gly120).
Form	Liquid
Storage buffer	0.01M PBS, pH 7.4, 50% Glycerol, 0.05% Proclin 300.
Clonality	Polyclonal
Isotype	IgG
Applications	ELISA, IHC, IF, WB
Target	Autophagy-related protein LC3 A, Autophagy-related ubiquitin-like modifier LC3 A, MAP1 light chain 3-like protein 1, Microtubule-associated protein 1 light chain 3 alpha, MAP1A/MAP1B LC3 A, MAP1LC3A, Microtubule-associated proteins 1A/1B light chain 3A, MAP1A/MAP1B light chain 3 A
Purification	Purified by antigen affinity column.
Accession	Q9H492
Stability and Storage	Use a manual defrost freezer and avoid repeated freeze thaw cycles. Store at 2 to 8°C for frequent use. Store at -20 to -80°C for twelve months from the date of receipt.
Note	For research use only.

Data Image



Various lysates were subjected to SDS PAGE followed by western blot with MAP1LC3A antibody (PHJ56801) at 1 μ g/ml.

Lane 1: Mouse brain lysate

Lane 2: Rat brain lysate

Second Ab: Goat Anti-Rabbit IgG H&L Polyclonal antibody, HRP (PTB96431) at 0.1 μ g/mL.

Predict MW: 14 kDa

Observed MW: 18 kDa



Recombinant Protein lysates were subjected to SDS PAGE followed by western blot with MAP1LC3A antibody (PHJ56801) at 1 μ g/ml.

Lane 1: Recombinant protein

Second Ab: Goat Anti-Rabbit IgG H&L Polyclonal antibody, HRP (PTB96431) at 0.1 μ g/mL.

Predict MW: 16 kDa

Observed MW: 16 kDa