

Anti-Human CES1 Polyclonal Antibody

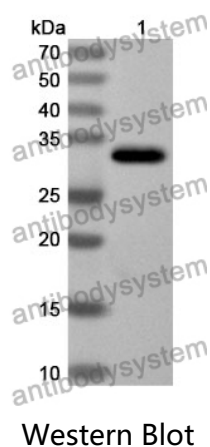
Summary

Catalog No.	PHD55601
Host species	Rabbit
Tested applications	ELISA: 1:4000-1:8000, IHC: 1:50-1:100, WB: 1:1000-1:4000
Species reactivity	Human
Immunogen	E. coli - derived recombinant Human CES1 (Gly18-Leu299).
Form	Liquid
Storage buffer	0.01M PBS, pH 7.4, 50% Glycerol, 0.05% Proclin 300.
Clonality	Polyclonal
Isotype	IgG
Applications	ELISA, IHC, WB
Target	Serine esterase 1, Monocyte/macrophage serine esterase, Retinyl ester hydrolase, Liver carboxylesterase 1, REH, Methylumbelliferyl-acetate deacetylase 1, HMSE, ACAT, hCE-1, Acyl-coenzyme A:cholesterol acyltransferase, CE-1, Brain carboxylesterase hBr1, CEH, SES1, CES2, Cholesteryl ester hydrolase, Triacylglycerol hydrolase, Cocaine carboxylesterase, TGH, Carboxylesterase 1, CES1, Egasyn
Purification	Purified by antigen affinity column.
Accession	P23141
Stability and Storage	Use a manual defrost freezer and avoid repeated freeze thaw cycles. Store at 2 to 8°C for frequent use. Store at -20 to -80°C for twelve months from the date of receipt.

Note

For research use only.

Data Image



Recombinant Protein lysates were subjected to SDS PAGE followed by western blot with CES1 antibody (PHD55601) at 1 µg/ml.

Lane 1: Recombinant protein

Second Ab: Goat Anti-Rabbit IgG H&L Polyclonal antibody, HRP (PTB96431) at 0.1 µg/mL.

Predict MW: 33 kDa

Observed MW: 33 kDa