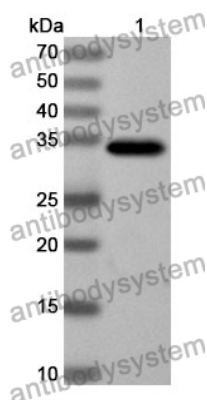


Anti-LMAN1 Polyclonal Antibody

Summary

Catalog No.	PHE63701
Host species	Rabbit
Tested applications	ELISA: 1:4000-1:8000, IHC: 1:50-1:100, WB: 1:1000-1:4000
Species reactivity	Human, Mouse, Rat
Immunogen	E. coli - derived recombinant Human LMAN1 (Pro198-Cys475).
Form	Liquid
Storage buffer	0.01M PBS, pH 7.4, 50% Glycerol, 0.05% Proclin 300.
Clonality	Polyclonal
Isotype	IgG
Applications	ELISA, IHC, WB
Target	LMAN1, Protein ERGIC-53, Lectin mannose-binding 1, ERGIC53, Intracellular mannose-specific lectin MR60, ER-Golgi intermediate compartment 53 kDa protein, Gp58, F5F8D
Purification	Purified by antigen affinity column.
Accession	P49257
Stability and Storage	Use a manual defrost freezer and avoid repeated freeze thaw cycles. Store at 2 to 8°C for frequent use. Store at -20 to -80°C for twelve months from the date of receipt.
Note	For research use only.

Data Image



Western Blot

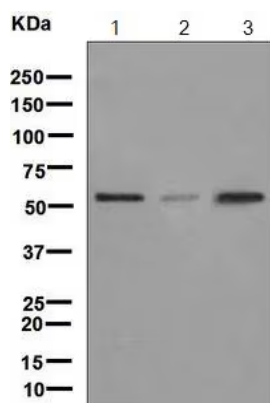
Recombinant Protein lysates were subjected to SDS PAGE followed by western blot with LMAN1 antibody (PHE63701) at 1 µg/ml.

Lane 1: Recombinant protein

Second Ab: Goat Anti-Rabbit IgG H&L Polyclonal antibody, HRP (PTB96431) at 0.1 µg/mL.

Predict MW: 34 kDa

Observed MW: 34 kDa



Western Blot

Various lysates were subjected to SDS PAGE followed by western blot with LMAN1 antibody (PHE63701) at 1 µg/ml.

Lane 1: HeLa

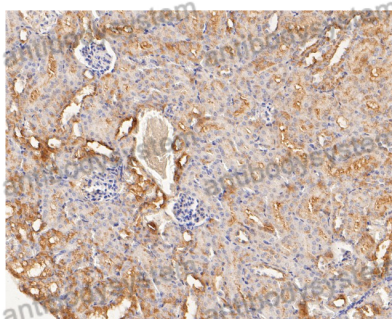
Lane 2: NCI-H460

Lane 3: JAR

Second Ab: Goat Anti-Rabbit IgG H&L Polyclonal antibody, HRP (PTB96431) at 0.1 µg/mL.

Predict MW: 57 kDa

Observed MW: 57 kDa



Immunohistochemical

Immunohistochemical analysis of mouse kidney stained for LMAN1 with PHE63701.