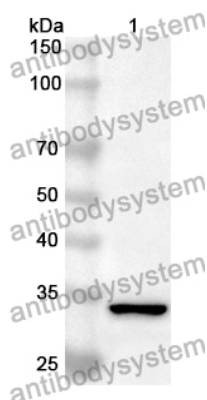


Anti-CBR3 Polyclonal Antibody

Summary

Catalog No.	PHB32101
Host species	Rabbit
Tested applications	ELISA: 1:4000-1:8000, IHC: 1:50-1:100, WB: 1:1000-1:4000
Species reactivity	Human, Mouse, Rat
Immunogen	E. coli - derived recombinant Human CBR3 (Met1-Trp277).
Form	Liquid
Storage buffer	0.01M PBS, pH 7.4, 50% Glycerol, 0.05% Proclin 300.
Clonality	Polyclonal
Isotype	IgG
Applications	ELISA, IHC, WB
Target	Carbonyl reductase [NADPH] 3, Short chain dehydrogenase/reductase family 21C member 2, NADPH-dependent carbonyl reductase 3, CBR3
Purification	Purified by antigen affinity column.
Accession	O75828
Stability and Storage	Use a manual defrost freezer and avoid repeated freeze thaw cycles. Store at 2 to 8°C for frequent use. Store at -20 to -80°C for twelve months from the date of receipt.
Note	For research use only.

Data Image



Western Blot

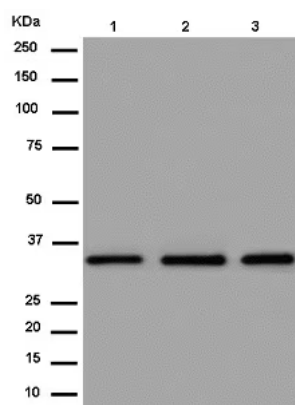
Recombinant Protein lysates were subjected to SDS PAGE followed by western blot with CBR3 antibody (PHB32101) at 1 µg/ml.

Lane 1: Recombinant protein

Second Ab: Goat Anti-Rabbit IgG H&L Polyclonal antibody, HRP (PTB96431) at 0.1 µg/mL.

Predict MW: 33 kDa

Observed MW: 33 kDa



Western Blot

Various lysates were subjected to SDS PAGE followed by western blot with CBR3 antibody (PHB32101) at 1 µg/ml.

Lane 1: Hela

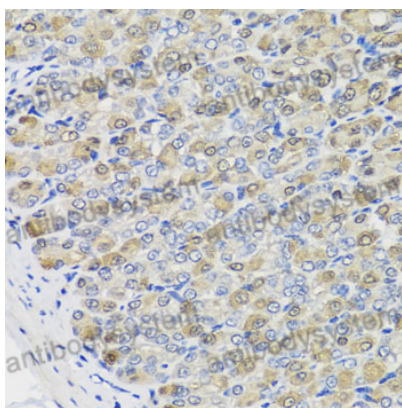
Lane 2: K562

Lane 3: 293T

Second Ab: Goat Anti-Rabbit IgG H&L Polyclonal antibody, HRP (PTB96431) at 0.1 µg/mL.

Predict MW: 31 kDa

Observed MW: 31 kDa



Immunohistochemical

Immunohistochemical analysis of mouse stomach stained for CBR3 with PHB32101.