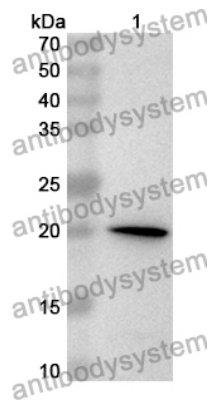


Anti-MYL9 Polyclonal Antibody

Summary

Catalog No.	PHD64101
Host species	Rabbit
Tested applications	ELISA: 1:4000-1:8000, IHC: 1:50-1:100, WB: 1:1000-1:4000
Species reactivity	Human, Mouse, Rat
Immunogen	E. coli - derived recombinant Human MYL9 (Arg5-Leu163).
Form	Liquid
Storage buffer	0.01M PBS, pH 7.4, 50% Glycerol, 0.05% Proclin 300.
Clonality	Polyclonal
Isotype	IgG
Applications	ELISA, IHC, WB
Target	Myosin regulatory light chain MRLC1, 20 kDa myosin light chain, Myosin regulatory light chain 2, smooth muscle isoform, MYRL2, MYL9, MLC-2C, LC20, Myosin regulatory light chain 9, MLC2, MRLC1, Myosin RLC, Myosin regulatory light polypeptide 9
Purification	Purified by antigen affinity column.
Accession	P24844
Stability and Storage	Use a manual defrost freezer and avoid repeated freeze thaw cycles. Store at 2 to 8°C for frequent use. Store at -20 to -80°C for twelve months from the date of receipt.
Note	For research use only.

Data Image



Western Blot

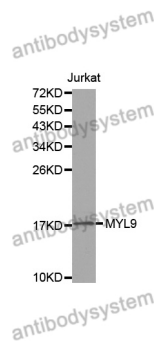
Recombinant Protein lysates were subjected to SDS PAGE followed by western blot with MYL9 antibody (PHD64101) at 1 µg/ml.

Lane 1: Recombinant protein

Second Ab: Goat Anti-Rabbit IgG H&L Polyclonal antibody, HRP (PTB96431) at 0.1 µg/mL.

Predict MW: 21 kDa

Observed MW: 21 kDa



Western Blot

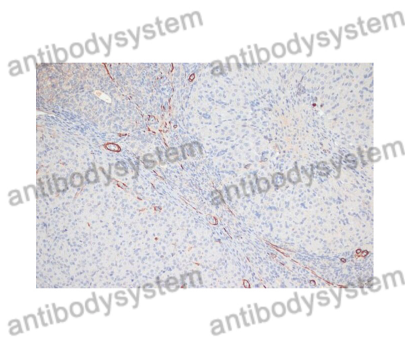
Various lysates were subjected to SDS PAGE followed by western blot with MYL9 antibody (PHD64101) at 1 µg/ml.

Lane 1: Jurkat

Second Ab: Goat Anti-Rabbit IgG H&L Polyclonal antibody, HRP (PTB96431) at 0.1 µg/mL.

Predict MW: 20 kDa

Observed MW: 19 kDa



Immunohistochemical

Immunohistochemical analysis of rat ovary stained for MYL9 with PHD64101.