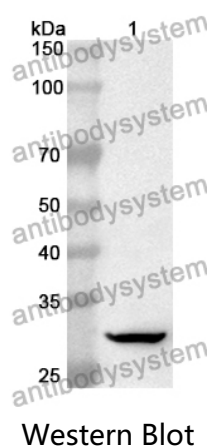


Anti-ALDOC Polyclonal Antibody

Summary

Catalog No.	PHC44801
Host species	Rabbit
Tested applications	ELISA: 1:4000-1:8000, IHC: 1:50-1:100, WB: 1:1000-1:4000
Species reactivity	Human, Mouse, Rat
Immunogen	E. coli - derived recombinant Human ALDOC (Asp34-Ser281).
Form	Liquid
Storage buffer	0.01M PBS, pH 7.4, 50% Glycerol, 0.05% Proclin 300.
Clonality	Polyclonal
Isotype	IgG
Applications	ELISA, IHC, WB
Target	Brain-type aldolase, ALDOC, ALDC, Fructose-bisphosphate aldolase C
Purification	Purified by antigen affinity column.
Accession	P09972
Stability and Storage	Use a manual defrost freezer and avoid repeated freeze thaw cycles. Store at 2 to 8°C for frequent use. Store at -20 to -80°C for twelve months from the date of receipt.
Note	For research use only.

Data Image



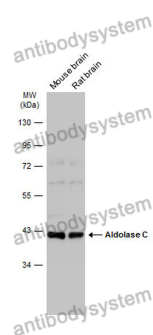
Recombinant Protein lysates were subjected to SDS PAGE followed by western blot with ALDOC antibody (PHC44801) at 1 µg/ml.

Lane 1: Recombinant protein

Second Ab: Goat Anti-Rabbit IgG H&L Polyclonal antibody, HRP (PTB96431) at 0.1 µg/mL.

Predict MW: 29 kDa

Observed MW: 29 kDa



Various lysates were subjected to SDS PAGE followed by western blot with ALDOC antibody (PHC44801) at 1 µg/ml.

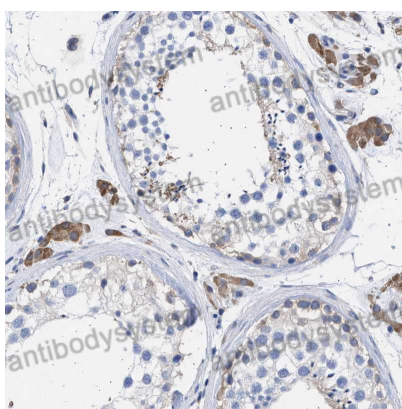
Lane 1: Mouse brain

Lane 2: Rat brain

Second Ab: Goat Anti-Rabbit IgG H&L Polyclonal antibody, HRP (PTB96431) at 0.1 µg/mL.

Predict MW: 39 kDa

Observed MW: 40 kDa



Immunohistochemical

Immunohistochemical analysis of human testis stained for ALDOC with PHC44801.