

# Anti-GRIA2 Polyclonal Antibody

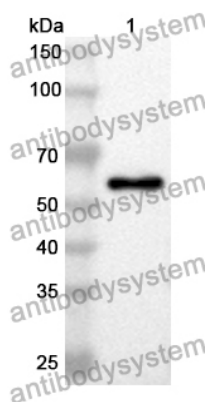
## Summary

---

<b>Catalog No.</b>	PHE34701
<b>Host species</b>	Rabbit
<b>Tested applications</b>	ELISA: 1:4000-1:8000, IHC: 1:50-1:100, WB: 1:1000-1:4000
<b>Species reactivity</b>	Human, Mouse, Rat
<b>Immunogen</b>	E. coli - derived recombinant Human GRIA2 (Asn25-Ala543).
<b>Form</b>	Liquid
<b>Storage buffer</b>	0.01M PBS, pH 7.4, 50% Glycerol, 0.05% Proclin 300.
<b>Clonality</b>	Polyclonal
<b>Isotype</b>	IgG
<b>Applications</b>	ELISA, IHC, WB
<b>Target</b>	GluR-2, AMPA-selective glutamate receptor 2, GluR-B, Glutamate receptor 2, GLUR2, GRIA2, GluA2, Glutamate receptor ionotropic, AMPA 2, GluR-K2
<b>Purification</b>	Purified by antigen affinity column.
<b>Accession</b>	P42262
<b>Stability and Storage</b>	Use a manual defrost freezer and avoid repeated freeze thaw cycles. Store at 2 to 8°C for frequent use. Store at -20 to -80°C for twelve months from the date of receipt.
<b>Note</b>	For research use only.

## Data Image

---



Western Blot

Recombinant Protein lysates were subjected to SDS PAGE followed by western blot with GRIA2 antibody (PHE34701) at 1 µg/ml.

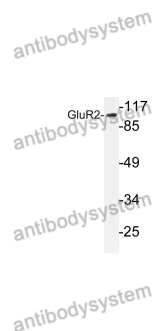
Lane 1: Recombinant protein

Second Ab: Goat Anti-Rabbit IgG H&L Polyclonal antibody, HRP (PTB96431) at 0.1 µg/mL.

Predict MW: 61 kDa

Observed MW: 61 kDa

Various lysates were subjected to SDS PAGE followed by western blot with GRIA2 antibody (PHE34701) at 1 µg/ml.



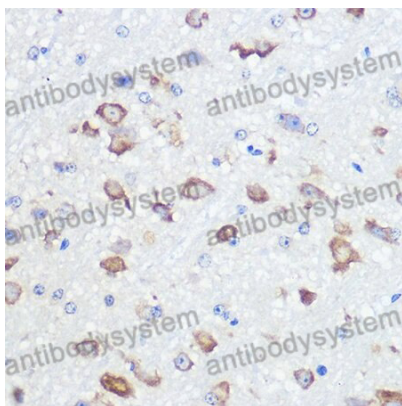
Western Blot

Lane 1: Rat brain

Second Ab: Goat Anti-Rabbit IgG H&L Polyclonal antibody, HRP (PTB96431) at 0.1 µg/mL.

Predict MW: 100 kDa

Observed MW: 100 kDa



Immunohistochemical

Immunohistochemical analysis of mouse brain stained for GRIA2 with PHE34701.