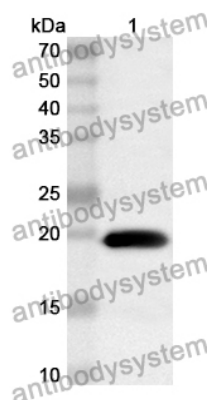


Anti-WTAP Polyclonal Antibody

Summary

Catalog No.	PHG96901
Host species	Rabbit
Tested applications	ELISA: 1:4000-1:8000, IHC: 1:50-1:100, WB: 1:1000-1:4000
Species reactivity	Human, Mouse, Rat
Immunogen	E. coli - derived recombinant Human WTAP (Met1-Asp150).
Form	Liquid
Storage buffer	0.01M PBS, pH 7.4, 50% Glycerol, 0.05% Proclin 300.
Clonality	Polyclonal
Isotype	IgG
Applications	ELISA, IHC, WB
Target	Wilms tumor 1-associating protein, Pre-mRNA-splicing regulator WTAP, hFL(2)D, WT1-associated protein, Female-lethal(2)D homolog, KIAA0105, WTAP
Purification	Purified by antigen affinity column.
Accession	Q15007
Stability and Storage	Use a manual defrost freezer and avoid repeated freeze thaw cycles. Store at 2 to 8°C for frequent use. Store at -20 to -80°C for twelve months from the date of receipt.
Note	For research use only.

Data Image



Western Blot

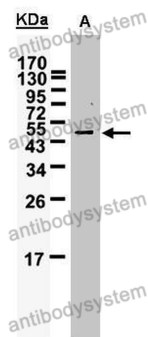
Recombinant Protein lysates were subjected to SDS PAGE followed by western blot with WTAP antibody (PHG96901) at 1 μ g/ml.

Lane 1: Recombinant protein

Second Ab: Goat Anti-Rabbit IgG H&L Polyclonal antibody, HRP (PTB96431) at 0.1 μ g/mL.

Predict MW: 20 kDa

Observed MW: 20 kDa



Western Blot

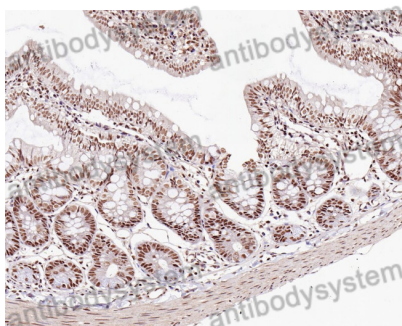
Various lysates were subjected to SDS PAGE followed by western blot with wtap antibody (PHG96901) at 1 μ g/ml.

Lane 1: Hone1

Second Ab: Goat Anti-Rabbit IgG H&L Polyclonal antibody, HRP (PTB96431) at 0.1 μ g/mL.

Predict MW: 44 kDa

Observed MW: 50 kDa



Immunohistochemical

Immunohistochemical analysis of rat small intestine stained for wtap with PHG96901.