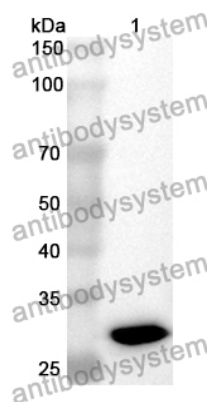


Anti-XPNPEP3 Polyclonal Antibody

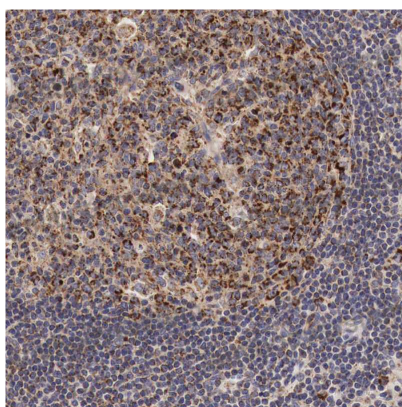
Summary

Catalog No.	PHJ96801
Host species	Rabbit
Tested applications	ELISA: 1:4000-1:8000, IHC: 1:50-1:100, WB: 1:1000-1:4000
Species reactivity	Human, Mouse, Rat
Immunogen	E. coli - derived recombinant Human XPNPEP3 (Glu253-Gln482).
Form	Liquid
Storage buffer	0.01M PBS, pH 7.4, 50% Glycerol, 0.05% Proclin 300.
Clonality	Polyclonal
Isotype	IgG
Applications	ELISA, IHC, WB
Target	Xaa-Pro aminopeptidase 3, APP3, XPNPEP3, Aminopeptidase P3, X-Pro aminopeptidase 3
Purification	Purified by antigen affinity column.
Accession	Q9NQH7
Stability and Storage	Use a manual defrost freezer and avoid repeated freeze thaw cycles. Store at 2 to 8°C for frequent use. Store at -20 to -80°C for twelve months from the date of receipt.
Note	For research use only.

Data Image



Western Blot



Immunohistochemical

Recombinant Protein lysates were subjected to SDS PAGE followed by western blot with XPNPEP3 antibody (PHJ96801) at 1 μ g/ml.

Lane 1: Recombinant protein

Second Ab: Goat Anti-Rabbit IgG H&L Polyclonal antibody, HRP (PTB96431) at 0.1 μ g/mL.

Predict MW: 28 kDa

Observed MW: 28 kDa

Immunohistochemical analysis of human lymph node stained for XPNPEP3 with PHJ96801.