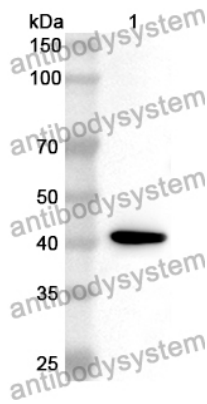


Anti-ATF4 Polyclonal Antibody

Summary

Catalog No.	PHD31101
Host species	Rabbit
Tested applications	ELISA: 1:4000-1:8000, IHC: 1:50-1:100, IF: 1:50-1:100, WB: 1:1000-1:4000
Species reactivity	Human, Mouse, Rat
Immunogen	E. coli - derived recombinant Human ATF4 (Met1-Pro351).
Form	Liquid
Storage buffer	0.01M PBS, pH 7.4, 50% Glycerol, 0.05% Proclin 300.
Clonality	Polyclonal
Isotype	IgG
Applications	ELISA, IHC, IF, WB
Target	TaxREB67, ATF4, cAMP-dependent transcription factor ATF-4, TXREB, CREB2, cAMP-responsive element-binding protein 2, Tax-responsive enhancer element-binding protein 67, Activating transcription factor 4, CREB-2, Cyclic AMP-dependent transcription factor ATF-4, Cyclic AMP-responsive element-binding protein 2
Purification	Purified by antigen affinity column.
Accession	P18848
Stability and Storage	Use a manual defrost freezer and avoid repeated freeze thaw cycles. Store at 2 to 8°C for frequent use. Store at -20 to -80°C for twelve months from the date of receipt.
Note	For research use only.

Data Image



Western Blot

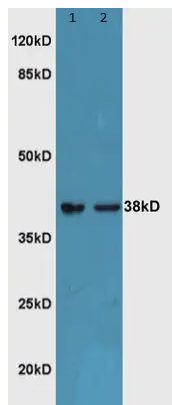
Recombinant Protein lysates were subjected to SDS PAGE followed by western blot with ATF4 antibody (PHD31101) at 1 μ g/ml.

Lane 1: Recombinant protein

Second Ab: Goat Anti-Rabbit IgG H&L Polyclonal antibody, HRP (PTB96431) at 0.1 μ g/mL.

Predict MW: 41 kDa

Observed MW: 41 kDa



Western Blot

Various lysates were subjected to SDS PAGE followed by western blot with ATF4 antibody (PHD31101) at 1 μ g/ml.

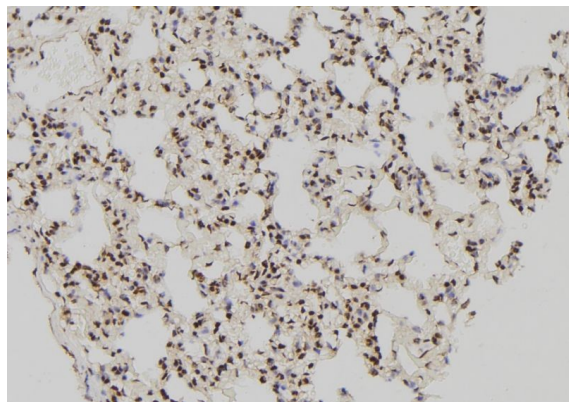
Lane 1: Mouse embryo

Lane 2: Mouse eye

Second Ab: Goat Anti-Rabbit IgG H&L Polyclonal antibody, HRP (PTB96431) at 0.1 μ g/mL.

Predict MW: 38 kDa

Observed MW: 38 kDa



Immunohistochemical analysis of rat lung stained for ATF4 with PHD31101.

Immunohistochemical