

Recombinant Human LAMA3 Protein, N-His

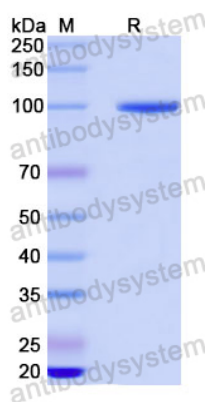
Summary

| | |
|-----------------------------------|-----------------------------------------------------------------------------------------------------------------------------------------------------------------------------------------------------------------------------------------------------------------------------------------------------------------------------------------------------------------------------|
| Catalog No. | YHH37102 |
| Alternative Names | Laminin subunit alpha-3, Epiligrin 170 kDa subunit, E170, Epiligrin subunit alpha, Kalinin subunit alpha, Laminin-5 subunit alpha, Laminin-6 subunit alpha, Laminin-7 subunit alpha, Nicein subunit alpha, LAMA3, LAMNA, laminin-5, laminin-332, epiligrin, kalinin, nicein, laminin-6, laminin-311, K-laminin, laminin-7, laminin-321, KS-laminin, laminin-13, laminin-323 |
| Form | Lyophilized |
| Storage buffer | Lyophilized from a solution in PBS pH 7.4, 0.02% NLS, 1mM EDTA, 4% Trehalose, 1% Mannitol. |
| Purity | >90% as determined by SDS-PAGE. |
| Applications | ELISA, Immunogen, SDS-PAGE, WB, Bioactivity testing in progress |
| Endotoxin level | Please contact with the lab for this information. |
| Expression system | E. coli |
| Accession | NP_000218.3 |
| Protein length | Arg837-Gln1724 |
| Nature | Recombinant |
| Predicted molecular weight | 100.28 kDa |
| Stability and Storage | Use a manual defrost freezer and avoid repeated freeze thaw cycles. Store at 2 to 8°C for frequent use. Store at -20 to -80°C for twelve months from the date of receipt. |
| Reconstitution | Reconstitute in sterile water for a stock solution. A copy of datasheet will be provided with the products, please refer to it for details. |

Recombinant Proteins & Antibodies

| | |
|-----------------|----------------------------------------------------------------------------------------------------------------------------------------------------------|
| Species | Homo sapiens (Human) |
| Shipping | In general, proteins are provided as lyophilized powder/frozen liquid. They are shipped out with dry ice/blue ice unless customers require otherwise. |
| Note | For research use only. |

Data Image



SDS-PAGE

SDS PAGE for Recombinant Human LAMA3 protein