

Recombinant Human CD169/SIGLEC1 Protein, C-Fc

Summary

Catalog No.	EHJ52702
Alternative Names	Sialoadhesin, Sialic acid-binding Ig-like lectin 1, Siglec-1, CD169, SIGLEC1, SN
Form	Lyophilized
Storage buffer	Lyophilized from a solution in PBS pH 7.4, 1mM EDTA, 4% Trehalose, 1% Mannitol.
Purity	>90% as determined by SDS-PAGE.
Applications	ELISA, Immunogen, SDS-PAGE, WB, Bioactivity testing in progress
Endotoxin level	Please contact with the lab for this information.
Expression system	Mammalian Cells
Accession	Q9BZZ2
Protein length	Met1-Gln1641
Nature	Recombinant
Predicted molecular weight	201.59 kDa
Stability and Storage	Use a manual defrost freezer and avoid repeated freeze thaw cycles. Store at 2 to 8°C for frequent use. Store at -20 to -80°C for twelve months from the date of receipt.
Reconstitution	Reconstitute in sterile water for a stock solution.
Species	Homo sapiens (Human)

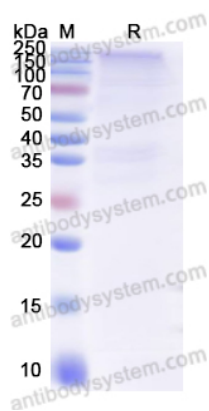
Shipping

In general, proteins are provided as lyophilized powder/frozen liquid. They are shipped out with dry ice/blue ice unless customers require otherwise.

Note

For research use only.

Data Image



SDS-PAGE

SDS PAGE for Recombinant Human CD169/SIGLEC1 Protein