

Anti-Human CD340/ERBB2/HER2/NEU Antibody (A21)

Summary

Catalog No.	FHC09630
Clone ID	A21
Host species	Mouse
Conjugation	Unconjugated
Species reactivity	Human
Form	Liquid
Storage buffer	0.01M PBS, pH 7.4, 0.09% Sodium azide.
Concentration	1 mg/ml
Purity	>95% as determined by SDS-PAGE.
Clonality	Monoclonal
Isotype	IgG2a, kappa
Applications	ELISA, FCM, IHC, WB
Target	p185erbB2, HER2, NGL, Tyrosine kinase-type cell surface receptor HER2, NEU, MLN 19, Proto-oncogene Neu, MLN19, ERBB2, Proto-oncogene c-ErbB-2, CD340, Receptor tyrosine-protein kinase erbB-2, Metastatic lymph node gene 19 protein
Purification	Protein A/G purified from cell culture supernatant.
Endotoxin level	Please contact with the lab for this information.
Accession	P04626

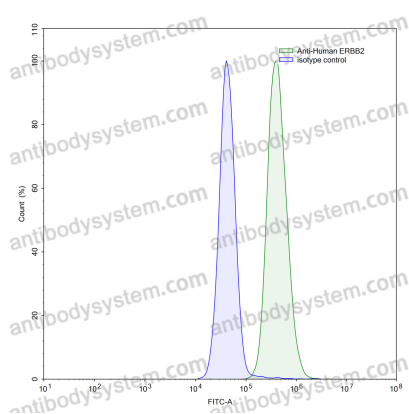
Stability and Storage

Use a manual defrost freezer and avoid repeated freeze-thaw cycles.

Store at 4°C short term (1-2 weeks). Store at -20°C 12 months. Store at -80°C long term.

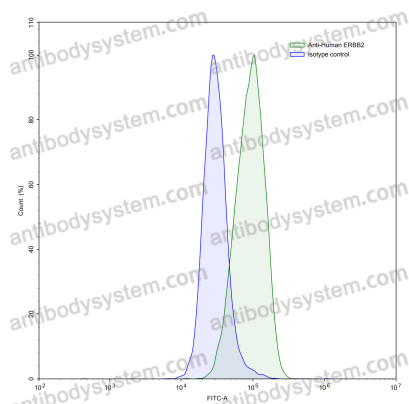
Note

For research use only.

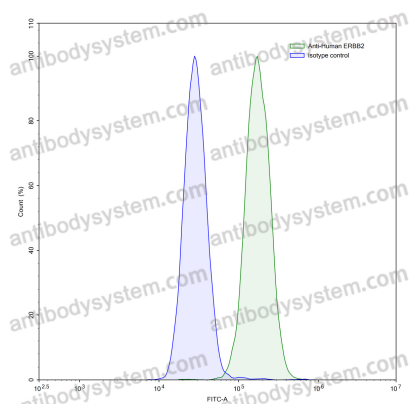
Data Image

Flow-cytometry

Flow-cytometry using anti-human ERBB2 antibody. MCF7 cells were stained with an irrelevant antibody (Blue Histogram) or an anti-human ERBB2 antibody monoclonal antibody (Catalog # FHC09630, Green Histogram) at a concentration of 5 µg/ml for 30 mins at RT. After washing, bound antibody was detected using a FITC conjugated goat anti-mouse antibody (Catalog # PMB96441) and cells analysed on a NovoCyt Flow Cytometer.



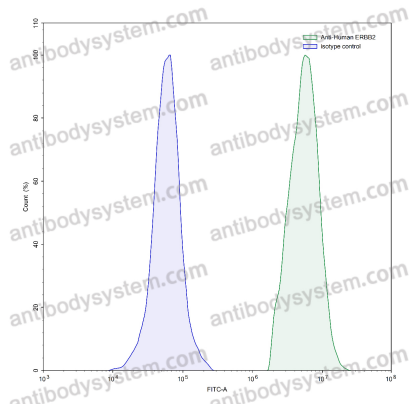
Flow-cytometry



Flow-cytometry

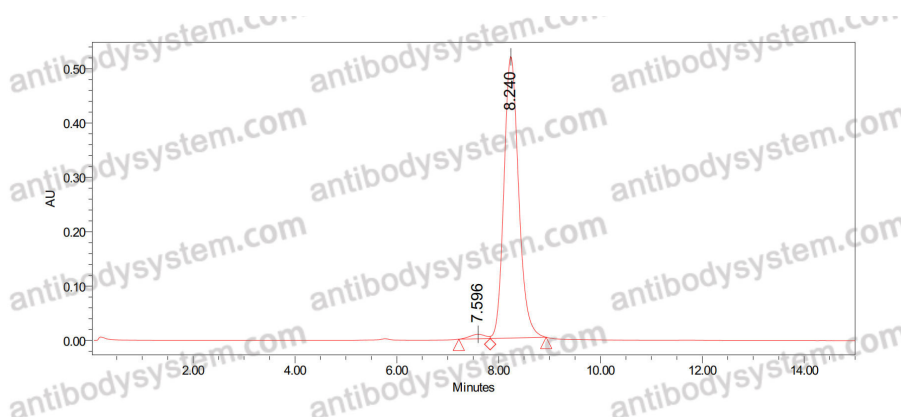
Flow-cytometry using anti-human ERBB2 antibody. MDA-MB-231 cells were stained with an irrelevant antibody (Blue Histogram) or an anti-human ERBB2 antibody monoclonal antibody (Catalog # FHC09630, Green Histogram) at a concentration of 5 $\mu\text{g/ml}$ for 30 mins at RT. After washing, bound antibody was detected using a FITC conjugated goat anti-mouse antibody (Catalog # PMB96441) and cells analysed on a NovoCyt Flow Cytometer.

Flow-cytometry using anti-human ERBB2 antibody. MDA-MB-231 cells were stained with an irrelevant antibody (Blue Histogram) or an anti-human ERBB2 antibody monoclonal antibody (Catalog # FHC09630, Green Histogram) at a concentration of 5 $\mu\text{g/ml}$ for 30 mins at RT. After washing, bound antibody was detected using a FITC conjugated goat anti-mouse antibody (Catalog # PMB96441) and cells analysed on a NovoCyt Flow Cytometer.



Flow-cytometry

Flow-cytometry using anti-human ERBB2 antibody. SK-BR-3 cells were stained with an irrelevant antibody (Blue Histogram) or an anti-human ERBB2 antibody monoclonal antibody (Catalog # FHC09630, Green Histogram) at a concentration of 5 µg/ml for 30 mins at RT. After washing, bound antibody was detected using a FITC conjugated goat anti-mouse antibody (Catalog # PMB96441) and cells analysed on a NovoCyt Flow Cytometer.



SEC-HPLC

The purity of this product is >95% as determined by SEC-HPLC.