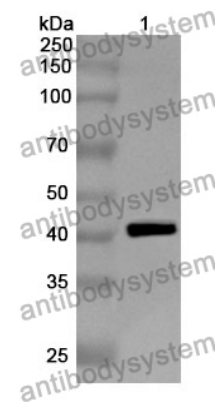


Anti-CD26/DPP4 Polyclonal Antibody

Summary

| | |
|------------------------------|---|
| Catalog No. | PHD74101 |
| Host species | Rabbit |
| Tested applications | ELISA: 1:4000-1:8000, IHC: 1:50-1:100, WB: 1:1000-1:4000 |
| Species reactivity | Human, Mouse, Rat |
| Immunogen | E. coli - derived recombinant Human CD26/DPP4 (Thr401-Thr746). |
| Form | Liquid |
| Storage buffer | 0.01M PBS, pH 7.4, 50% Glycerol, 0.05% Proclin 300. |
| Clonality | Polyclonal |
| Isotype | IgG |
| Applications | ELISA, IHC, WB |
| Target | TP103,Dipeptidyl peptidase IV,ADABP,Dipeptidyl peptidase 4,CD26,DPP4,Dipeptidyl peptidase IV soluble form,Dipeptidyl peptidase IV membrane form,DPP IV,ADCP2,Adenosine deaminase complexing protein 2,ADCP-2,T-cell activation antigen CD26 |
| Purification | Purified by antigen affinity column. |
| Accession | P27487 |
| Stability and Storage | Use a manual defrost freezer and avoid repeated freeze thaw cycles. Store at 2 to 8°C for frequent use. Store at -20 to -80°C for twelve months from the date of receipt. |
| Note | For research use only. |

Data Image



WESTERN BLOT

Recombinant Protein lysates were subjected to SDS PAGE followed by western blot with CD26/DPP4 antibody (PHD74101) at 1 μ g/ml.

Lane 1: Recombinant protein

Second Ab: Goat Anti-Rabbit IgG H&L Polyclonal antibody, HRP (PTB96431) at 0.1 μ g/mL.

Predict MW: 42 kDa

Observed MW: 42 kDa