

Recombinant *Vibrio cholerae* serotype O1 ctxB/Cholera Toxin Subunit B Protein, N-His-SUMO

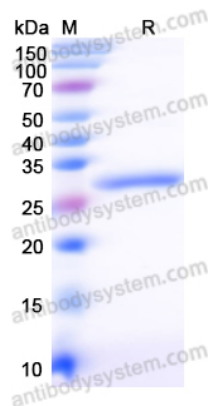
Summary

Catalog No.	YXX05801
Alternative Names	Cholera enterotoxin subunit B, Cholera enterotoxin B chain, Cholera enterotoxin gamma chain, Choleragenoid, ctxB, toxB, VC_1456
Form	Lyophilized
Storage buffer	Lyophilized from a solution in PBS pH 7.4, 0.02% NLS, 1mM EDTA, 4% Trehalose, 1% Mannitol.
Purity	>90% as determined by SDS-PAGE.
Applications	ELISA, Immunogen, SDS-PAGE, WB, Bioactivity testing in progress
Endotoxin level	Please contact with the lab for this information.
Expression system	E. coli
Accession	P01556
Protein length	Thr22-Asn124
Nature	Recombinant
Predicted molecular weight	23.99 kDa
Stability and Storage	Use a manual defrost freezer and avoid repeated freeze thaw cycles. Store at 2 to 8°C for frequent use. Store at -20 to -80°C for twelve months from the date of receipt.
Reconstitution	Reconstitute in sterile water for a stock solution. A copy of datasheet will be provided with the products, please refer to it for details.

Recombinant Proteins & Antibodies

Species	Vibrio cholerae serotype O1 (strain ATCC 39315 / El Tor Inaba N16961)
Shipping	In general, proteins are provided as lyophilized powder/frozen liquid. They are shipped out with dry ice/blue ice unless customers require otherwise.
Note	For research use only.

Data Image



SDS-PAGE

SDS PAGE for Recombinant Vibrio cholerae serotype O1 (strain ATCC 39315 / El Tor Inaba N16961) ctxB/Cholera Toxin Subunit B protein