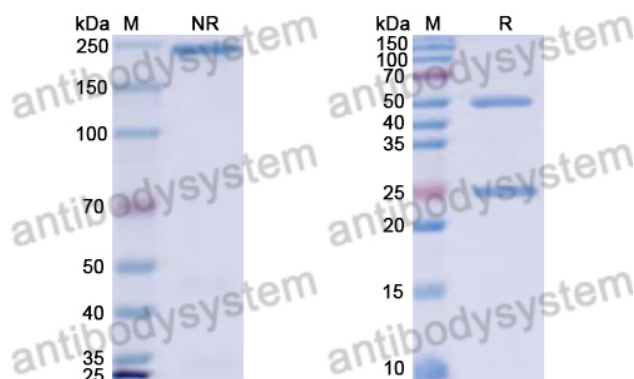


Human IgG2, lambda Isotype Control antibody (HyHEL-10)

Summary

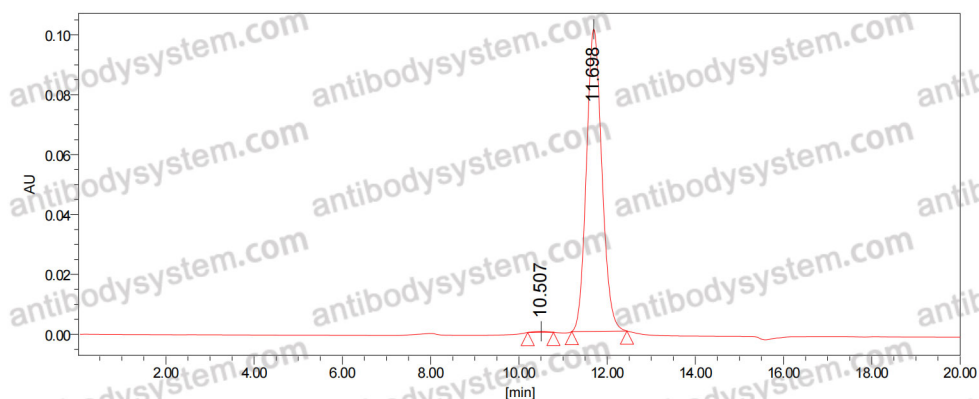
Catalog No.	RHJ92902
Clone ID	HyHEL-10
Host species	Human
Form	Liquid
Storage buffer	0.01M PBS, pH 7.4.
Concentration	2.2 mg/ml
Purity	>95% as determined by SDS-PAGE.
Clonality	Monoclonal
Isotype	IgG2, lambda
Applications	FCM, Isotype Control, In vivo Control
Target	IgG2,lambda
Purification	Protein A/G purified from cell culture supernatant.
Endotoxin level	Please contact with the lab for this information.
Expression system	Mammalian Cells
Stability and Storage	Use a manual defrost freezer and avoid repeated freeze-thaw cycles. Store at 4°C short term (1-2 weeks). Store at -20°C 12 months. Store at -80°C long term.
Note	For research use only.

Data Image



SDS PAGE for Human IgG2,
lambda Isotype Control
antibody (HyHEL-10)

SDS-PAGE



The purity of this product is
>95% as determined by SEC-
HPLC.

SEC-HPLC