

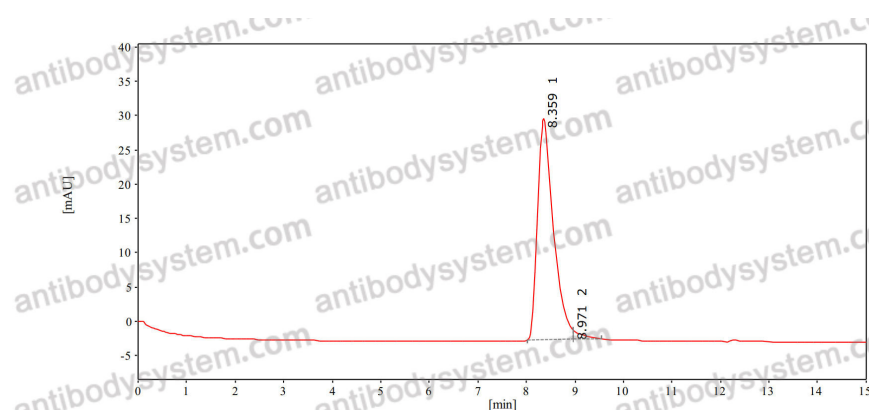
Anti-Human IgE/IGHE Antibody (8D6)

Summary

Catalog No.	FHJ92720
Clone ID	8D6
Host species	Mouse
Conjugation	Unconjugated
Species reactivity	Human
Form	Liquid
Storage buffer	100 mM Pro-Ac, 20 mM Arg, pH 5.0.
Concentration	2.31 mg/ml
Purity	>95% as determined by SDS-PAGE.
Clonality	Monoclonal
Isotype	IgG2a
Applications	ELISA, FCM, SPR
Target	Ig epsilon chain C region, IGHE, Ig epsilon chain C region ND, Immunoglobulin heavy constant epsilon
Purification	Protein A/G purified from cell culture supernatant.
Endotoxin level	Please contact with the lab for this information.
Accession	P01854
Stability and Storage	Use a manual defrost freezer and avoid repeated freeze-thaw cycles. Store at 4°C short term (1-2 weeks). Store at -20°C 12 months. Store at - 80°C long term.

Note For research use only.

Data Image



SEC-HPLC

The purity of this product is >95% as determined by SEC-HPLC.