

# Recombinant EBV/HHV4 GP42/Glycoprotein 42 Protein, C-His

## Summary

---

<b>Catalog No.</b>	EVV25101
<b>Alternative Names</b>	Glycoprotein 42, gp42, Soluble gp42, BZLF2
<b>Form</b>	Lyophilized
<b>Storage buffer</b>	Lyophilized from a solution in PBS pH 7.4, 1mM EDTA, 4% Trehalose, 1% Mannitol.
<b>Purity</b>	>90% as determined by SDS-PAGE.
<b>Applications</b>	ELISA, Immunogen, SDS-PAGE, WB, Bioactivity testing in progress
<b>Endotoxin level</b>	Please contact with the lab for this information.
<b>Expression system</b>	Mammalian Cells
<b>Accession</b>	P03205
<b>Protein length</b>	Arg30-Ser223
<b>Nature</b>	Recombinant
<b>Predicted molecular weight</b>	25 kDa
<b>Stability and Storage</b>	Use a manual defrost freezer and avoid repeated freeze thaw cycles. Store at 2 to 8°C for frequent use. Store at -20 to -80°C for twelve months from the date of receipt.
<b>Reconstitution</b>	Reconstitute in sterile water for a stock solution.
<b>Species</b>	Epstein-Barr virus (strain B95-8) (HHV-4) (Human herpesvirus 4)

## Shipping

In general, proteins are provided as lyophilized powder/frozen liquid. They are shipped out with dry ice/blue ice unless customers require otherwise.

## Note

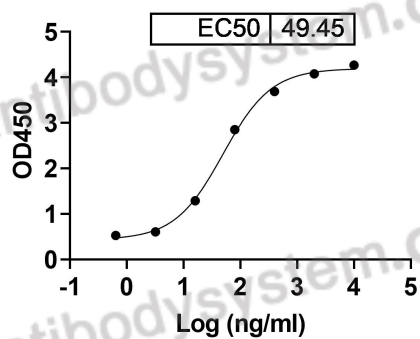
For research use only.

## Data Image



SDS-PAGE for Recombinant EBV/HHV4  
GP42/Glycoprotein 42 Protein

Clone: SAA2098 binds with EBV/HHV-4 GP42

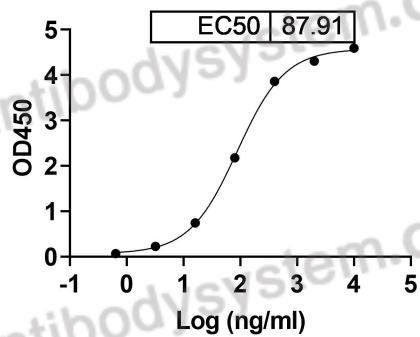


Bioactivity

Detects SAA2098([RVV25101](#)) in indirect ELISAs.



Clone: SAA2099 binds with EBV/HHV-4 GP42



Bioactivity

Detects SAA2099([RVV25102](#)) in indirect ELISAs.