

Recombinant Human CK-MB Protein, N-His & C-Strep

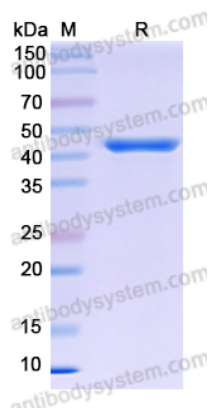
Summary

| | |
|-----------------------------------|--|
| Catalog No. | YHC21102 |
| Alternative Names | Creatine kinase M-type, 2.7.3.2, Creatine kinase M chain, Creatine phosphokinase M-type, CPK-M, M-CK, CKM, CKMM, Creatine kinase B-type, 2.7.3.2, Brain creatine kinase, B-CK, Creatine kinase B chain, Creatine phosphokinase B-type, CPK-B, CKB, CKBB, CKMB, CK-MB |
| Form | Lyophilized |
| Storage buffer | Lyophilized from a solution in PBS pH 7.4, 1mM EDTA, 4% Trehalose, 1% Mannitol. |
| Purity | >90% as determined by SDS-PAGE. |
| Applications | ELISA, Immunogen, SDS-PAGE, WB, Bioactivity testing in progress |
| Endotoxin level | Please contact with the lab for this information. |
| Expression system | E. coli |
| Accession | P06732 & P12277 |
| Protein length | CKM [Met1-Lys381] & CKB [Met1-Lys381] |
| Nature | Recombinant |
| Predicted molecular weight | 44 kDa & 44 kDa (Reduced) |
| Stability and Storage | Use a manual defrost freezer and avoid repeated freeze thaw cycles. Store at 2 to 8°C for frequent use. Store at -20 to -80°C for twelve months from the date of receipt. |

Recombinant Proteins & Antibodies

| | |
|-----------------------|---|
| Reconstitution | Reconstitute in sterile water for a stock solution. A copy of datasheet will be provided with the products, please refer to it for details. |
| Species | Homo sapiens (Human) |
| Shipping | In general, proteins are provided as lyophilized powder/frozen liquid. They are shipped out with dry ice/blue ice unless customers require otherwise. |
| Note | For research use only. |

Data Image



SDS-PAGE

SDS PAGE for Recombinant Human CK-MB protein