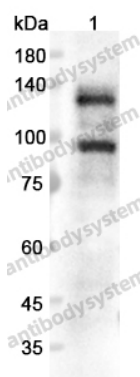


Anti-CDH3 Polyclonal Antibody

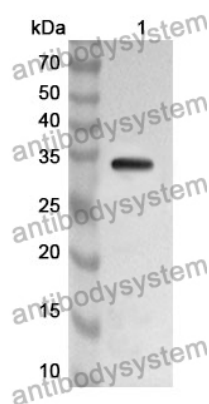
Summary

Catalog No.	PHD50501
Host species	Rabbit
Tested applications	ELISA: 1:4000-1:8000, IHC: 1:50-1:100, WB: 1:1000-1:4000
Species reactivity	Human, Mouse, Rat
Immunogen	E. coli - derived recombinant Human CDH3 (Gly371-Leu660).
Form	Liquid
Storage buffer	0.01M PBS, pH 7.4, 50% Glycerol, 0.05% Proclin 300.
Clonality	Polyclonal
Isotype	IgG
Applications	ELISA, IHC, WB
Target	Placental cadherin,CDH3,Cadherin-3,P-cadherin,CDHP
Purification	Purified by antigen affinity column.
Accession	P22223
Stability and Storage	Use a manual defrost freezer and avoid repeated freeze thaw cycles. Store at 2 to 8°C for frequent use. Store at -20 to -80°C for twelve months from the date of receipt.
Note	For research use only.

Data Image



Western blot



Western Blot

Various lysates were subjected to SDS PAGE followed by western blot with CDH3 antibody (PHD50501) at 0.55ug/ml.

Lane 1: BXPC3 cell lysate

Second Ab: Goat Anti-Rabbit IgG H&L Polyclonal antibody, HRP (PTB96431) at 0.1 µg/mL.

Predict MW: 91 kDa

Observed MW: 91,120 kDa

Recombinant Protein lysates were subjected to SDS PAGE followed by western blot with CDH3 antibody (PHD50501) at 1 µg/ml.

Lane 1: Recombinant Protein

Second Ab: Goat Anti-Rabbit IgG H&L Polyclonal antibody, HRP (PTB96431) at 0.1 µg/mL.

Predict MW: 34 kDa

Observed MW: 34 kDa