

# Anti-HBV S/L-HBsAg/L glycoprotein Antibody (G10)

## Summary

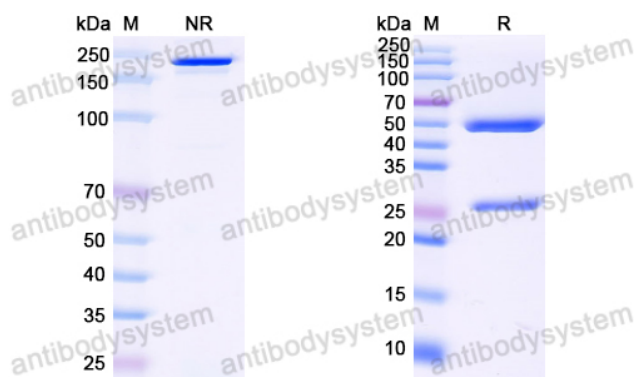
---

<b>Catalog No.</b>	RVV03003
<b>Clone ID</b>	G10
<b>Host species</b>	Human
<b>Species reactivity</b>	Hepatitis B virus genotype A2 subtype adw2 (strain Rutter 1979) (HBV-A)
<b>Form</b>	Liquid
<b>Storage buffer</b>	0.01M PBS, pH 7.4.
<b>Concentration</b>	1.95 mg/ml
<b>Purity</b>	>95% as determined by SDS-PAGE.
<b>Clonality</b>	Monoclonal
<b>Isotype</b>	IgG1
<b>Applications</b>	FCM, SPR
<b>Target</b>	Large envelope protein S, L glycoprotein, L-HBsAg, LHB, Large surface protein, Major surface protein, preS1 domain, Pre-S1
<b>Purification</b>	Protein A/G purified from cell culture supernatant.
<b>Endotoxin level</b>	Please contact with the lab for this information.
<b>Expression system</b>	Mammalian Cells
<b>Accession</b>	P03141
<b>Stability and Storage</b>	Use a manual defrost freezer and avoid repeated freeze-thaw cycles. Store at 4°C short term (1-2 weeks). Store at -20°C 12 months. Store at -80°C long term.

Note

For research use only.

## Data Image



SDS PAGE for HBV S/L-HBsAg/L glycoprotein  
Antibody (G10)

SDS-PAGE