

Anti-Pan HBV S/L-HBsAg/L glycoprotein Antibody (KR127)

Summary

Catalog No.	RVV03002
Clone ID	KR127
Host species	Human
Species reactivity	Hepatitis B virus (HBV) (Q2EID8), Hepatitis B virus genotype A2 subtype adw (isolate Japan/Nishioka/1983)(HBV-A) (P03142), Hepatitis B virus genotype D subtype adw (isolate United Kingdom/adyw/1979)(HBV-D) (P03139), Hepatitis B virus (HBV) (Q96836), Hepatitis B virus (HBV) (Q86986), Hepatitis B virus (HBV) (Q81186), Hepatitis B virus genotype C subtype adr (isolate Korea/Kim/1989) (HBV-C) (Q67867)
Form	Liquid
Storage buffer	0.01M PBS, pH 7.4.
Concentration	1 mg/ml
Purity	>95% as determined by SDS-PAGE.
Clonality	Monoclonal
Isotype	IgG1
Applications	ELISA, WB
Target	Large envelope protein S, L glycoprotein, L-HBsAg, LHB, Large surface protein, Major surface protein, preS1 domain, Pre-S1
Purification	Protein A/G purified from cell culture supernatant.
Endotoxin level	Please contact with the lab for this information.

Recombinant Proteins & Antibodies

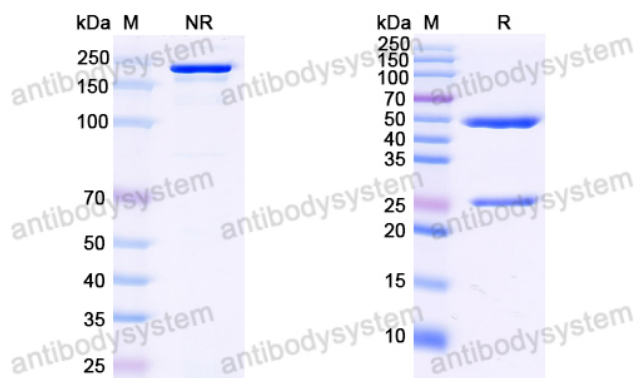
Expression system Mammalian Cells

Accession P03142

Stability and Storage Use a manual defrost freezer and avoid repeated freeze-thaw cycles.
Store at 4°C short term (1-2 weeks). Store at -20°C 12 months. Store at -80°C long term.

Note For research use only.

Data Image



SDS-PAGE

SDS PAGE for Pan HBV S/L-HBsAg/L glycoprotein
Antibody (KR127)