

Anti-HMGB1 Polyclonal Antibody

Summary

Catalog No.	PHC40301
Host species	Rabbit
Tested applications	ELISA: 1:4000-1:8000, IHC: 1:50-1:100, WB: 1:1000-1:4000
Species reactivity	Human, Mouse, Rat
Immunogen	E. coli - derived recombinant Human HMGB1 (Met1-Glu215).
Form	Liquid
Storage buffer	0.01M PBS, pH 7.4, 50% Glycerol, 0.05% Proclin 300.
Clonality	Polyclonal
Isotype	IgG
Applications	ELISA, IHC, WB
Target	High mobility group protein B1, HMGB1, HMG1, HMG-1, High mobility group protein 1
Purification	Purified by antigen affinity column.
Accession	P09429
Stability and Storage	Use a manual defrost freezer and avoid repeated freeze thaw cycles. Store at 2 to 8°C for frequent use. Store at -20 to -80°C for twelve months from the date of receipt.
Note	For research use only.

Data Image



Western Blot

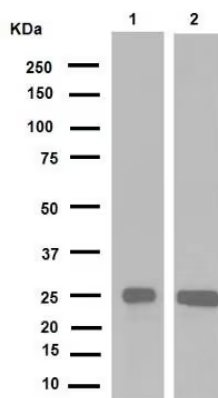
Recombinant Protein lysates were subjected to SDS PAGE followed by western blot with HMGB1 antibody (PHC40301) at 1 μ g/ml.

Lane 1: Recombinant protein

Second Ab: Goat Anti-Rabbit IgG H&L Polyclonal antibody, HRP (PTB96431) at 0.1 μ g/mL.

Predict MW: 27 kDa

Observed MW: 27 kDa



Western Blot

Various lysates were subjected to SDS PAGE followed by western blot with HMGB1 antibody (PHC40301) at 1 μ g/ml.

Lane 1: SK-BR-3

Lane 2: Hela

Second Ab: Goat Anti-Rabbit IgG H&L Polyclonal antibody, HRP (PTB96431) at 0.1 μ g/mL.

Predict MW: 25 kDa

Observed MW: 25 kDa



Immunohistochemical

Immunohistochemical analysis of mouse esophagus stained for HMGB1 with PHC40301.