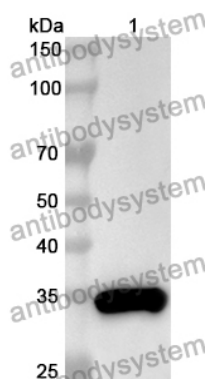


Anti-KEAP1 Polyclonal Antibody

Summary

Catalog No.	PHG72102
Host species	Rabbit
Tested applications	ELISA: 1:4000-1:8000, IHC: 1:50-1:100, WB: 1:1000-1:4000
Species reactivity	Human, Mouse, Rat
Immunogen	E. coli - derived recombinant Human KEAP1 (Gly325-Cys624).
Form	Liquid
Storage buffer	0.01M PBS, pH 7.4, 50% Glycerol, 0.05% Proclin 300.
Clonality	Polyclonal
Isotype	IgG
Applications	ELISA, IHC, WB
Target	INrf2, INRF2, KLHL19, KEAP1, KIAA0132, Kelch-like ECH-associated protein 1, Cytosolic inhibitor of Nrf2, Kelch-like protein 19
Purification	Purified by antigen affinity column.
Accession	Q14145
Stability and Storage	Use a manual defrost freezer and avoid repeated freeze thaw cycles. Store at 2 to 8°C for frequent use. Store at -20 to -80°C for twelve months from the date of receipt.
Note	For research use only.

Data Image



Western Blot

Recombinant Protein lysates were subjected to SDS PAGE followed by western blot with KEAP1 antibody (PHG72102) at 1 μ g/ml.

Lane 1: Recombinant protein

Second Ab: Goat Anti-Rabbit IgG H&L Polyclonal antibody, HRP (PTB96431) at 0.1 μ g/mL.

Predict MW: 35 kDa

Observed MW: 35 kDa

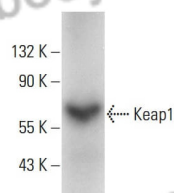
Various lysates were subjected to SDS PAGE followed by western blot with KEAP1 antibody (PHG72102) at 1 μ g/ml.

Lane 1: HepG2

Second Ab: Goat Anti-Rabbit IgG H&L Polyclonal antibody, HRP (PTB96431) at 0.1 μ g/mL.

Predict MW: 70 kDa

Observed MW: 70 kDa



Western Blot



Immunohistochemical

Immunohistochemical analysis of rat testis stained for KEAP1 with PHG72102.