

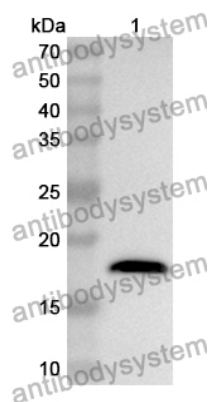
# Anti-HBEGF Polyclonal Antibody

## Summary

---

<b>Catalog No.</b>	PHJ42901
<b>Host species</b>	Rabbit
<b>Tested applications</b>	ELISA: 1:4000-1:8000, IHC: 1:50-1:200, IF:1:50-1:200, WB: 1:1000-1:4000
<b>Species reactivity</b>	Human, Mouse, Rat
<b>Immunogen</b>	E. coli - derived recombinant Human HBEGF (Val21-Thr160).
<b>Form</b>	Liquid
<b>Storage buffer</b>	0.01M PBS, pH 7.4, 50% Glycerol, 0.05% Proclin 300.
<b>Concentration</b>	1.36 mg/ml
<b>Clonality</b>	Polyclonal
<b>Isotype</b>	IgG
<b>Applications</b>	ELISA, IHC, IF, WB
<b>Target</b>	DTR, DT-R, DTS, HEGFL, HB-EGF, HBEGF, Proheparin-binding EGF-like growth factor, Diphtheria toxin receptor
<b>Purification</b>	Purified by antigen affinity column.
<b>Accession</b>	Q99075
<b>Stability and Storage</b>	Use a manual defrost freezer and avoid repeated freeze thaw cycles. Store at 2 to 8°C for frequent use. Store at -20 to -80°C for twelve months from the date of receipt.
<b>Note</b>	For research use only.

## Data Image



Western Blot

Recombinant Protein lysates were subjected to SDS PAGE followed by western blot with HBEGF antibody (PHJ42901) at 1 µg/ml.

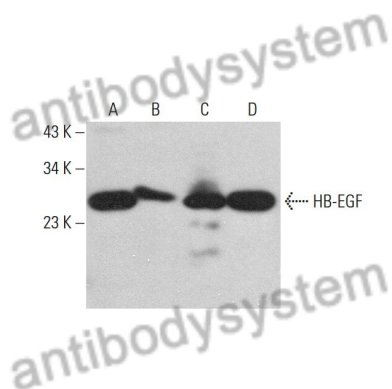
Lane 1: Recombinant protein

Second Ab: Goat Anti-Rabbit IgG H&L Polyclonal antibody, HRP (PTB96431) at 0.1 µg/mL.

Predict MW: 18 kDa

Observed MW: 18 kDa

Various lysates were subjected to SDS PAGE followed by western blot with HBEGF antibody (PHJ42901) at 1 µg/ml.



Western Blot

Lane 1: RAW 264. 7

Lane 2: NIH/3T3

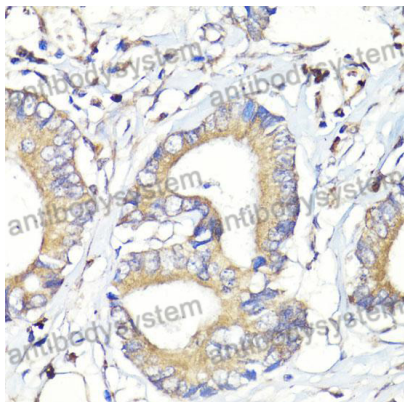
Lane 3: TK-1

Lane 4: EOC 20

Second Ab: Goat Anti-Rabbit IgG H&L Polyclonal antibody, HRP (PTB96431) at 0.1 µg/mL.

Predict MW: 23 kDa

Observed MW: 24 kDa



Immunohistochemical analysis of human colon carcinoma stained for HBEGF with PHJ42901.

Immunohistochemical