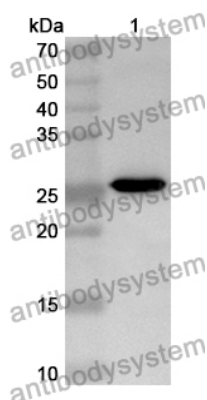


Anti-DSC1 Polyclonal Antibody

Summary

Catalog No.	PHG17101
Host species	Rabbit
Tested applications	ELISA: 1:4000-1:8000, IHC: 1:50-1:100, WB: 1:1000-1:4000
Species reactivity	Human, Mouse
Immunogen	E. coli - derived recombinant Human DSC1 (Ala486-Asn686).
Form	Liquid
Storage buffer	0.01M PBS, pH 7.4, 50% Glycerol, 0.05% Proclin 300.
Clonality	Polyclonal
Isotype	IgG
Applications	ELISA, IHC, WB
Target	DSC1, Desmosomal glycoprotein 2/3, Desmocollin-1, DG2/DG3, Cadherin family member 1, CDHF1
Purification	Purified by antigen affinity column.
Accession	Q08554
Stability and Storage	Use a manual defrost freezer and avoid repeated freeze thaw cycles. Store at 2 to 8°C for frequent use. Store at -20 to -80°C for twelve months from the date of receipt.
Note	For research use only.

Data Image



Western Blot

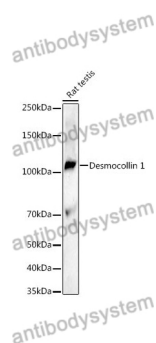
Recombinant Protein lysates were subjected to SDS PAGE followed by western blot with DSC1 antibody (PHG17101) at 1 μ g/ml.

Lane 1: Recombinant protein

Second Ab: Goat Anti-Rabbit IgG H&L Polyclonal antibody, HRP (PTB96431) at 0.1 μ g/mL.

Predict MW: 25 kDa

Observed MW: 25 kDa



Western Blot

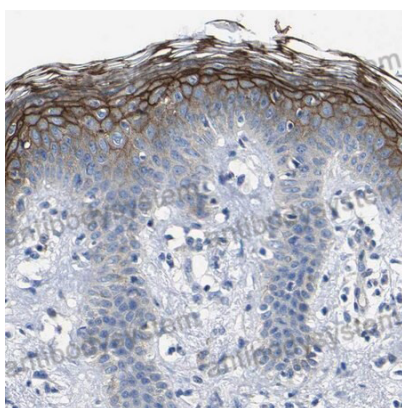
Various lysates were subjected to SDS PAGE followed by western blot with DSC1 antibody (PHG17101) at 1 μ g/ml.

Lane 1: Rat testis

Second Ab: Goat Anti-Rabbit IgG H&L Polyclonal antibody, HRP (PTB96431) at 0.1 μ g/mL.

Predict MW: 100 kDa

Observed MW: 105 kDa



Immunohistochemical

Immunohistochemical analysis of human skin tissue stained for DSC1 with PHG17101.