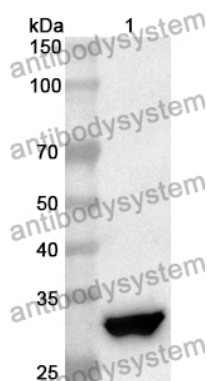


Anti-Human ITIH5 Polyclonal Antibody

Summary

Catalog No.	PHJ16001
Host species	Rabbit
Tested applications	ELISA: 1:4000-1:8000, IHC: 1:50-1:100, WB: 1:1000-1:4000
Species reactivity	Human
Immunogen	E. coli - derived recombinant Human ITIH5 (Gln251-Asn508).
Form	Liquid
Storage buffer	0.01M PBS, pH 7.4, 50% Glycerol, 0.05% Proclin 300.
Clonality	Polyclonal
Isotype	IgG
Applications	ELISA, IHC, WB
Target	Inter-alpha-trypsin inhibitor heavy chain H5, KIAA1953, Inter-alpha-inhibitor heavy chain 5, ITI-HC5, ITI heavy chain H5, ITIH5
Purification	Purified by antigen affinity column.
Accession	Q86UX2
Stability and Storage	Use a manual defrost freezer and avoid repeated freeze thaw cycles. Store at 2 to 8°C for frequent use. Store at -20 to -80°C for twelve months from the date of receipt.
Note	For research use only.

Data Image



Western Blot

Recombinant Protein lysates were subjected to SDS PAGE followed by western blot with ITIH5 antibody (PHJ16001) at 1 µg/ml.

Lane 1: Recombinant protein

Second Ab: Goat Anti-Rabbit IgG H&L Polyclonal antibody, HRP (PTB96431) at 0.1 µg/mL.

Predict MW: 31 kDa

Observed MW: 31 kDa

Various lysates were subjected to SDS PAGE followed by western blot with ITIH5 antibody (PHJ16001) at 1 µg/ml.

Lane 1: PANC1

Second Ab: Goat Anti-Rabbit IgG H&L Polyclonal antibody, HRP (PTB96431) at 0.1 µg/mL.

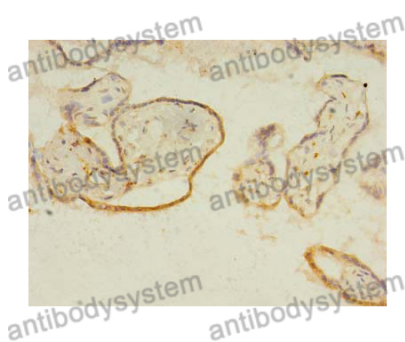
Predict MW: 105 kDa

Observed MW: 105 kDa



Western Blot

Immunohistochemical analysis of human placenta stained for ITIH5 with PHJ16001.



Immunohistochemical