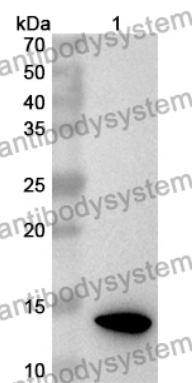


Anti-Human TLR5 Polyclonal Antibody

Summary

Catalog No.	PHA95401
Host species	Rabbit
Tested applications	ELISA: 1:4000-1:8000, IHC: 1:50-1:100, WB: 1:1000-1:4000
Species reactivity	Human
Immunogen	E. coli - derived recombinant Human TLR5 (Ile21-Phe115).
Form	Liquid
Storage buffer	0.01M PBS, pH 7.4, 50% Glycerol, 0.05% Proclin 300.
Clonality	Polyclonal
Isotype	IgG
Applications	ELISA, IHC, WB
Target	TIL3, TLR5, Toll/interleukin-1 receptor-like protein 3, Toll-like receptor 5
Purification	Purified by antigen affinity column.
Accession	O60602
Stability and Storage	Use a manual defrost freezer and avoid repeated freeze thaw cycles. Store at 2 to 8°C for frequent use. Store at -20 to -80°C for twelve months from the date of receipt.
Note	For research use only.

Data Image



Western Blot

Recombinant Protein lysates were subjected to SDS PAGE followed by western blot with TLR5 antibody (PHA95401) at 1 μ g/ml.

Lane 1: Recombinant protein

Second Ab: Goat Anti-Rabbit IgG H&L Polyclonal antibody, HRP (PTB96431) at 0.1 μ g/mL.

Predict MW: 13 kDa

Observed MW: 13 kDa

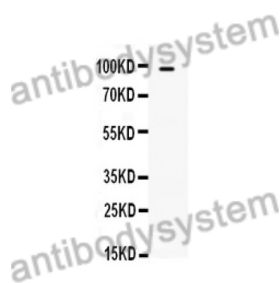
Various lysates were subjected to SDS PAGE followed by western blot with TLR5 antibody (PHA95401) at 1 μ g/ml.

Lane 1: Jurkat

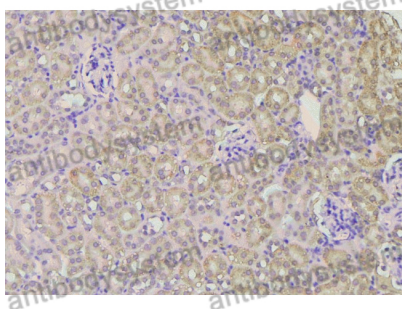
Second Ab: Goat Anti-Rabbit IgG H&L Polyclonal antibody, HRP (PTB96431) at 0.1 μ g/mL.

Predict MW: 98 kDa

Observed MW: 98 kDa



Western Blot



Immunohistochemical

Immunohistochemical analysis of mouse kidney stained for TLR5 with PHA95401.