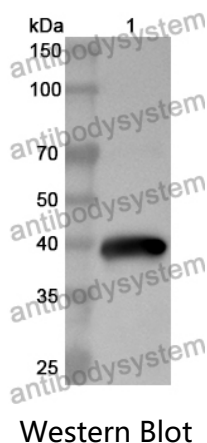


Anti-Human CD39/ENTPD1 Polyclonal Antibody

Summary

Catalog No.	PHE74001
Host species	Rabbit
Tested applications	ELISA: 1:4000-1:8000, IHC: 1:50-1:100, WB: 1:1000-1:4000
Species reactivity	Human
Immunogen	E. coli - derived recombinant Human CD39/ENTPD1 (Met1-Tyr340).
Form	Liquid
Storage buffer	0.01M PBS, pH 7.4, 50% Glycerol, 0.05% Proclin 300.
Clonality	Polyclonal
Isotype	IgG
Applications	ELISA, IHC, WB
Target	Ecto-ATP diphosphohydrolase 1, NTPDase 1, ENTPD1, Ecto-ATPase 1, Ecto-apyrase, Ecto-ATPDase 1, Ectonucleoside triphosphate diphosphohydrolase 1, CD39, Lymphoid cell activation antigen
Purification	Purified by antigen affinity column.
Accession	P49961
Stability and Storage	Use a manual defrost freezer and avoid repeated freeze thaw cycles. Store at 2 to 8°C for frequent use. Store at -20 to -80°C for twelve months from the date of receipt.
Note	For research use only.

Data Image



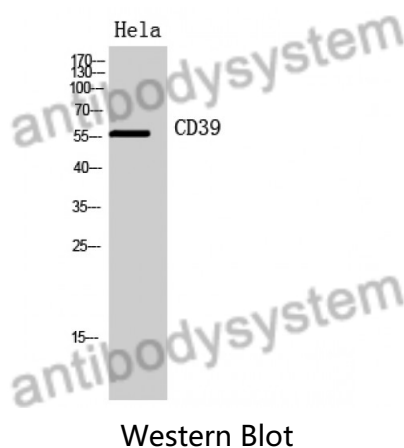
Recombinant Protein lysates were subjected to SDS PAGE followed by western blot with CD39/ENTPD1 antibody (PHE74001) at 1 µg/ml.

Lane 1: Recombinant protein

Second Ab: Goat Anti-Rabbit IgG H&L Polyclonal antibody, HRP (PTB96431) at 0.1 µg/mL.

Predict MW: 41 kDa

Observed MW: 41 kDa



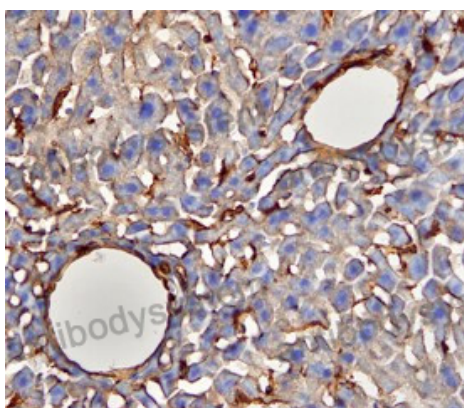
Various lysates were subjected to SDS PAGE followed by western blot with ENTPD1 antibody (PHE74001) at 1 µg/ml.

Lane 1: Hela

Second Ab: Goat Anti-Rabbit IgG H&L Polyclonal antibody, HRP (PTB96431) at 0.1 µg/mL.

Predict MW: 57 kDa

Observed MW: 57 kDa



Immunohistochemical

Immunohistochemical analysis of mouse liver stained for ENTPD1 with PHE74001.