

Anti-MAP3K7CL Polyclonal Antibody

Summary

Catalog No.	PHF21701
Host species	Rabbit
Tested applications	ELISA: 1:4000-1:8000, IHC: 1:50-1:100, WB: 1:1000-1:4000
Species reactivity	Human, Mouse, Rat
Immunogen	E. coli - derived recombinant Human MAP3K7CL (Asp24-Ser142).
Form	Liquid
Storage buffer	0.01M PBS, pH 7.4, 50% Glycerol, 0.05% Proclin 300.
Clonality	Polyclonal
Isotype	IgG
Applications	ELISA, IHC, WB
Target	C21orf7, TAK1-like protein, TAK1L, MAP3K7CL, MAP3K7 C-terminal-like protein
Purification	Purified by antigen affinity column.
Accession	P57077
Stability and Storage	Use a manual defrost freezer and avoid repeated freeze thaw cycles. Store at 2 to 8°C for frequent use. Store at -20 to -80°C for twelve months from the date of receipt.
Note	For research use only.

Data Image



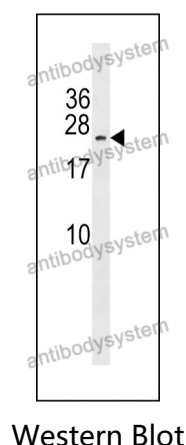
Recombinant Protein lysates were subjected to SDS PAGE followed by western blot with MAP3K7CL antibody (PHF21701) at 1 µg/ml.

Lane 1: Recombinant protein

Second Ab: Goat Anti-Rabbit IgG H&L Polyclonal antibody, HRP (PTB96431) at 0.1 µg/mL.

Predict MW: 16 kDa

Observed MW: 16 kDa



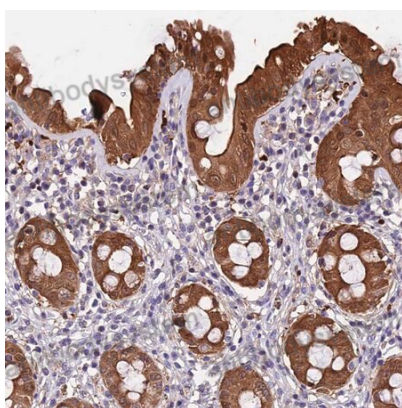
Various lysates were subjected to SDS PAGE followed by western blot with MAP3K7CL antibody (PHF21701) at 1 µg/ml.

Lane 1: CEM

Second Ab: Goat Anti-Rabbit IgG H&L Polyclonal antibody, HRP (PTB96431) at 0.1 µg/mL.

Predict MW: 27 kDa

Observed MW: 27 kDa



Immunohistochemical

Immunohistochemical analysis of human rectum tissue stained for MAP3K7CL with PHF21701.