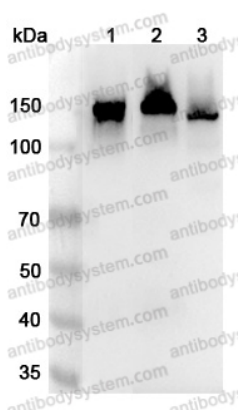


Anti-CD325/CDH2 Polyclonal Antibody

Summary

Catalog No.	PHD31901
Host species	Rabbit
Tested applications	ELISA: 1:4000-1:8000, IHC: 1:50-1:100, WB: 1:1000-1:4000
Species reactivity	Human, Mouse, Rat
Immunogen	E. coli - derived recombinant Human CD325/CDH2 (Asp160-Ala724).
Form	Liquid
Storage buffer	0.01M PBS, pH 7.4, 50% Glycerol, 0.05% Proclin 300.
Clonality	Polyclonal
Isotype	IgG
Applications	ELISA, IHC, WB
Target	N-cadherin, CDH2, Cadherin-2, CD325, CDw325, Neural cadherin, CDHN, NCAD
Purification	Purified by antigen affinity column.
Accession	P19022
Stability and Storage	Use a manual defrost freezer and avoid repeated freeze thaw cycles. Store at 2 to 8°C for frequent use. Store at -20 to -80°C for twelve months from the date of receipt.
Note	For research use only.

Data Image



Western Blot

Various lysates were subjected to SDS PAGE followed by western blot with CDH2 antibody (PHD31901) at 1µg/ml.

Lane 1: Mouse heart lysate

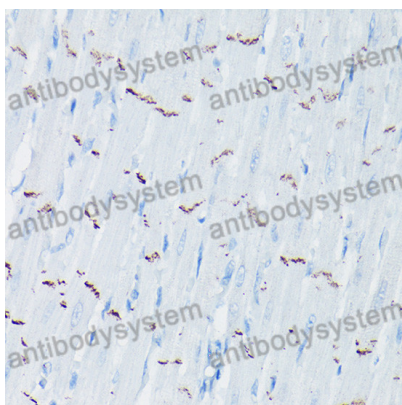
Lane 2: Rat heart lysate

Lane 3: Rat brain lysate

Second Ab: Goat Anti-Rabbit IgG H&L Polyclonal antibody, HRP (PTB96431) at 0.1 µg/mL.

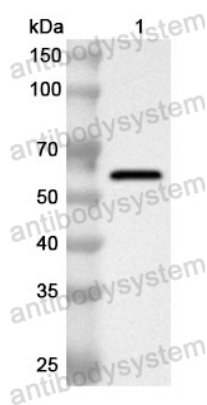
Predict MW: 100 KDa

Observed MW: 130 kDa



Immunohistochemical

Immunohistochemical analysis of rat heart tissue stained for CDH2 with PHD31901.



Western Blot

Recombinant Protein lysates were subjected to SDS PAGE followed by western blot with CD325/CDH2 antibody (PHD31901) at 1 µg/ml.

Lane 1: Recombinant Protein

Second Ab: Goat Anti-Rabbit IgG H&L Polyclonal antibody, HRP (PTB96431) at 0.1 µg/mL.

Predict MW: 64 kDa

Observed MW: 64 kDa