

# Anti-Human AGXT Polyclonal Antibody

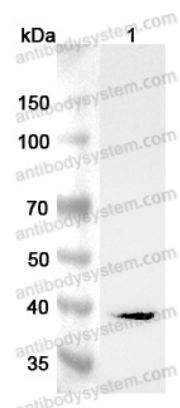
## Summary

---

<b>Catalog No.</b>	PHD46101
<b>Host species</b>	Rabbit
<b>Tested applications</b>	ELISA: 1:4000-1:8000, IHC: 1:50-1:100, WB: 1:1000-1:4000
<b>Species reactivity</b>	Human
<b>Immunogen</b>	E. coli - derived recombinant Human AGXT (Met1-Leu392).
<b>Form</b>	Liquid
<b>Storage buffer</b>	0.01M PBS, pH 7.4, 50% Glycerol, 0.05% Proclin 300.
<b>Clonality</b>	Polyclonal
<b>Isotype</b>	IgG
<b>Applications</b>	ELISA, IHC, WB
<b>Target</b>	SPAT, Serine--pyruvate aminotransferase, AGXT, AGT1, Alanine--glyoxylate aminotransferase, AGT, SPT
<b>Purification</b>	Purified by antigen affinity column.
<b>Accession</b>	P21549
<b>Stability and Storage</b>	Use a manual defrost freezer and avoid repeated freeze thaw cycles. Store at 2 to 8°C for frequent use. Store at -20 to -80°C for twelve months from the date of receipt.
<b>Note</b>	For research use only.

## Data Image

---



Western Blot

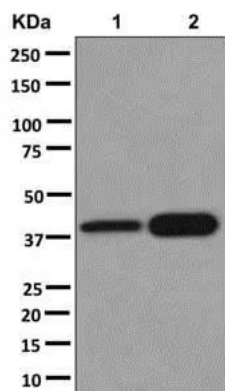
Various lysates were subjected to SDS PAGE followed by western blot with AGXT antibody (PHD46101) at 1 µg/ml.

Lane 1: Mouse liver lysate

Second Ab: Goat Anti-Rabbit IgG H&L Polyclonal antibody, HRP (PTB96431) at 0.1 µg/mL.

Predict MW: 43 kDa

Observed MW: 40 kDa



Western Blot

Various lysates were subjected to SDS PAGE followed by western blot with AGXT antibody (PHD46101) at 1 µg/ml.

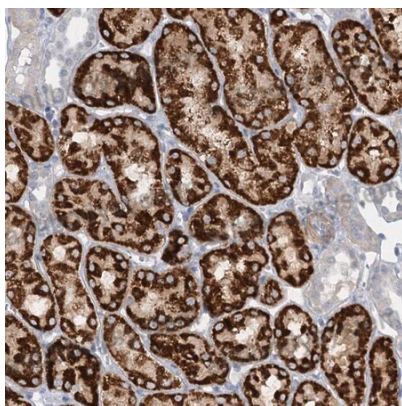
Lane 1: HepG2

Lane 2: Human liver

Second Ab: Goat Anti-Rabbit IgG H&L Polyclonal antibody, HRP (PTB96431) at 0.1 µg/mL.

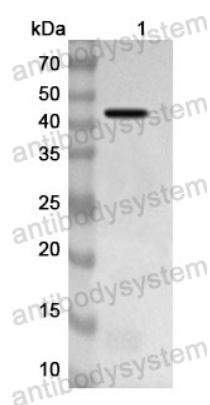
Predict MW: 43 kDa

Observed MW: 43 kDa



Immunohistochemical

Immunohistochemical analysis of human kidney tissue stained for AGXT with PHD46101.



Western Blot

Recombinant Protein lysates were subjected to SDS PAGE followed by western blot with AGXT antibody (PHD46101) at 1  $\mu$ g/ml.

Lane 1: Recombinant Protein

Second Ab: Goat Anti-Rabbit IgG H&L Polyclonal antibody, HRP (PTB96431) at 0.1  $\mu$ g/mL.

Predict MW: 45 kDa

Observed MW: 45 kDa