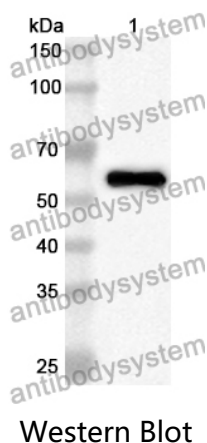


Anti-MDM2 Polyclonal Antibody

Summary

Catalog No.	PHF84501
Host species	Rabbit
Tested applications	ELISA: 1:4000-1:8000, IHC: 1:50-1:100, WB: 1:1000-1:4000
Species reactivity	Human, Mouse, Rat
Immunogen	E. coli - derived recombinant Human MDM2 (Asn3-Pro491).
Form	Liquid
Storage buffer	0.01M PBS, pH 7.4, 50% Glycerol, 0.05% Proclin 300.
Clonality	Polyclonal
Isotype	IgG
Applications	ELISA, IHC, WB
Target	MDM2, Hdm2, p53-binding protein Mdm2, E3 ubiquitin-protein ligase Mdm2, RING-type E3 ubiquitin transferase Mdm2, Double minute 2 protein, Oncoprotein Mdm2
Purification	Purified by antigen affinity column.
Accession	Q00987
Stability and Storage	Use a manual defrost freezer and avoid repeated freeze thaw cycles. Store at 2 to 8°C for frequent use. Store at -20 to -80°C for twelve months from the date of receipt.
Note	For research use only.

Data Image



Recombinant Protein lysates were subjected to SDS PAGE followed by western blot with MDM2 antibody (PHF84501) at 1 µg/ml.

Lane 1: Recombinant protein

Second Ab: Goat Anti-Rabbit IgG H&L Polyclonal antibody, HRP (PTB96431) at 0.1 µg/mL.

Predict MW: 57 kDa

Observed MW: 57 kDa

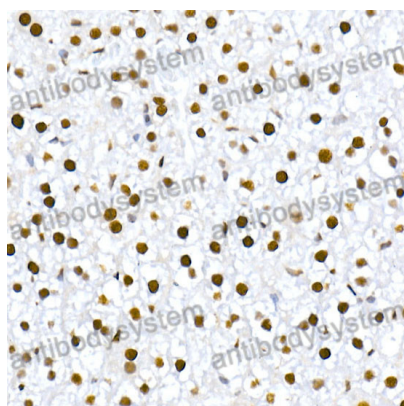
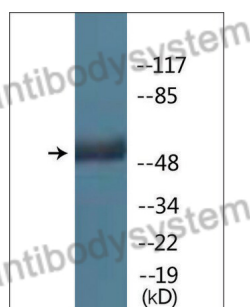
Various lysates were subjected to SDS PAGE followed by western blot with MDM2 antibody (PHF84501) at 1 µg/ml.

Lane 1: COS7

Second Ab: Goat Anti-Rabbit IgG H&L Polyclonal antibody, HRP (PTB96431) at 0.1 µg/mL.

Predict MW: 55 kDa

Observed MW: 55 kDa



Immunohistochemical

Immunohistochemical analysis of mouse liver tissue stained for MDM2 with PHF84501.