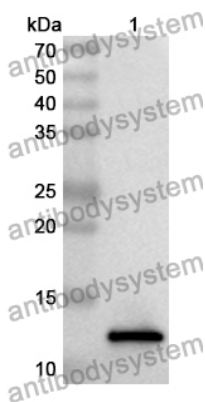


Anti-Human CD279/PDCD1/PD1 Polyclonal Antibody

Summary

Catalog No.	PHH02201
Host species	Rabbit
Tested applications	ELISA: 1:4000-1:8000, IHC: 1:50-1:100, WB: 1:1000-1:4000
Species reactivity	Human
Immunogen	E. coli - derived recombinant Human CD279/PDCD1/PD1 (Leu41-Ala132).
Form	Liquid
Storage buffer	0.01M PBS, pH 7.4, 50% Glycerol, 0.05% Proclin 300.
Clonality	Polyclonal
Isotype	IgG
Applications	ELISA, IHC, WB
Target	Programmed cell death protein 1, Protein PD-1, hPD-1, PD1, PDCD1, CD279
Purification	Purified by antigen affinity column.
Accession	Q15116
Stability and Storage	Use a manual defrost freezer and avoid repeated freeze thaw cycles. Store at 2 to 8°C for frequent use. Store at -20 to -80°C for twelve months from the date of receipt.
Note	For research use only.

Data Image



Western Blot

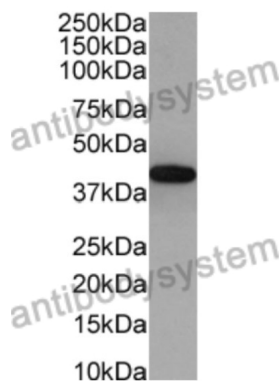
Recombinant Protein lysates were subjected to SDS PAGE followed by western blot with CD279/PDCD1/PD1 antibody (PHH02201) at 1 μ g/ml.

Lane 1: Recombinant protein

Second Ab: Goat Anti-Rabbit IgG H&L Polyclonal antibody, HRP (PTB96431) at 0.1 μ g/mL.

Predict MW: 13 kDa

Observed MW: 13 kDa



Western Blot

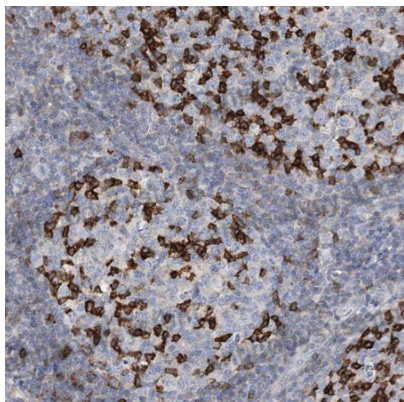
Various lysates were subjected to SDS PAGE followed by western blot with PDCD1 antibody (PHH02201) at 1 μ g/ml.

Lane 1: Mouse lymph node

Second Ab: Goat Anti-Rabbit IgG H&L Polyclonal antibody, HRP (PTB96431) at 0.1 μ g/mL.

Predict MW: 32 kDa

Observed MW: 43 kDa



Immunohistochemical analysis of human tonsil stained for PDCD1 with PHH02201.

Immunohistochemical