

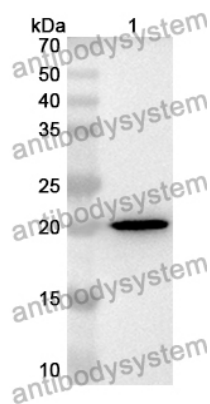
Anti-Treponema pallidum TPF1/Antigen 4D

Polyclonal Antibody

Summary

| | |
|------------------------------|---|
| Catalog No. | PXX06301 |
| Host species | Rabbit |
| Tested applications | ELISA: 1:4000-1:8000, WB: 1:2000-1:8000 |
| Species reactivity | Treponema pallidum (strain Nichols) |
| Immunogen | E. coli - derived recombinant Treponema pallidum TPF1/Antigen 4D (Met1-Ala177). |
| Form | Liquid |
| Storage buffer | 0.01M PBS, pH 7.4, 50% Glycerol, 0.05% Proclin 300. |
| Concentration | 1.21 mg/ml |
| Clonality | Polyclonal |
| Isotype | IgG |
| Applications | ELISA, IHC, WB |
| Target | Antigen TpF1, Antigen 4D, Antigen C1-5, tpf1, TP_1038 |
| Purification | Purified by antigen affinity column. |
| Accession | P16665 |
| Stability and Storage | Use a manual defrost freezer and avoid repeated freeze thaw cycles. Store at 2 to 8°C for frequent use. Store at -20 to -80°C for twelve months from the date of receipt. |
| Note | For research use only. |

Data Image



Western Blot

Recombinant Protein lysates were subjected to SDS PAGE followed by western blot with TPF1/Antigen 4D antibody (PXX06301) at 1 μ g/ml.

Lane 1: Recombinant protein

Second Ab: Goat Anti-Rabbit IgG H&L Polyclonal antibody, HRP (PTB96431) at 0.1 μ g/mL.

Predict MW: 21 kDa

Observed MW: 21 kDa