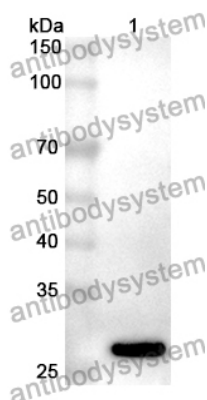


Anti-CAPN3 Polyclonal Antibody

Summary

Catalog No.	PHD42101
Host species	Rabbit
Tested applications	ELISA: 1:4000-1:8000, IHC: 1:50-1:100, WB: 1:1000-1:4000
Species reactivity	Human, Mouse, Rat
Immunogen	E. coli - derived recombinant Human CAPN3 (Ile602-Ala821).
Form	Liquid
Storage buffer	0.01M PBS, pH 7.4, 50% Glycerol, 0.05% Proclin 300.
Clonality	Polyclonal
Isotype	IgG
Applications	ELISA, IHC, WB
Target	CANPL3, New calpain 1, nCL-1, Calpain p94, Calpain L3, CANP3, CAPN3, Calcium-activated neutral proteinase 3, Muscle-specific calcium-activated neutral protease 3, Calpain-3, NCL1, CANP 3
Purification	Purified by antigen affinity column.
Accession	P20807
Stability and Storage	Use a manual defrost freezer and avoid repeated freeze thaw cycles. Store at 2 to 8°C for frequent use. Store at -20 to -80°C for twelve months from the date of receipt.
Note	For research use only.

Data Image



Western Blot

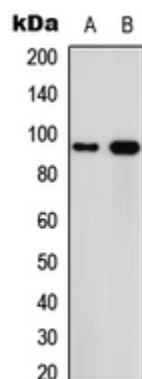
Recombinant Protein lysates were subjected to SDS PAGE followed by western blot with CAPN3 antibody (PHD42101) at 1 µg/ml.

Lane 1: Recombinant protein

Second Ab: Goat Anti-Rabbit IgG H&L Polyclonal antibody, HRP (PTB96431) at 0.1 µg/mL.

Predict MW: 28 kDa

Observed MW: 28 kDa



Western Blot

Various lysates were subjected to SDS PAGE followed by western blot with CAPN3 antibody (PHD42101) at 1 µg/ml.

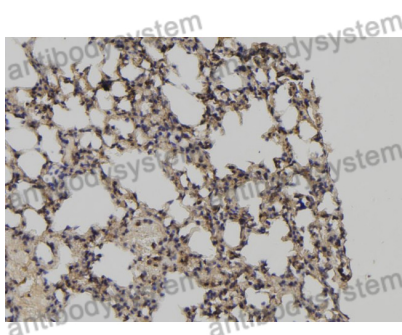
Lane 1: MCF7

Lane 2: PC12

Second Ab: Goat Anti-Rabbit IgG H&L Polyclonal antibody, HRP (PTB96431) at 0.1 µg/mL.

Predict MW: 94 kDa

Observed MW: 94 kDa



Immunohistochemical

Immunohistochemical analysis of mouse lung stained for CAPN3 with PHD42101.