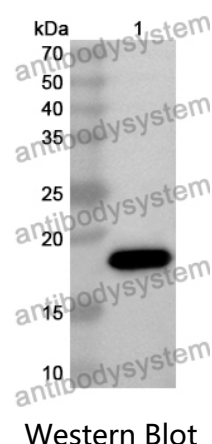


Anti-Mouse IL2 Polyclonal Antibody

Summary

Catalog No.	PMF36801
Host species	Rabbit
Tested applications	ELISA: 1:4000-1:8000, IHC: 1:50-1:100, WB: 1:1000-1:4000
Species reactivity	Mouse
Immunogen	E. coli - derived recombinant Mouse IL2 (Ala21-Gln169).
Form	Liquid
Storage buffer	0.01M PBS, pH 7.4, 50% Glycerol, 0.05% Proclin 300.
Clonality	Polyclonal
Isotype	IgG
Applications	ELISA, IHC, WB
Target	IL2, IL-2, Aldesleukin, Interleukin-2, TCGF, T-cell growth factor
Purification	Purified by antigen affinity column.
Accession	P04351
Stability and Storage	Use a manual defrost freezer and avoid repeated freeze thaw cycles. Store at 2 to 8°C for frequent use. Store at -20 to -80°C for twelve months from the date of receipt.
Note	For research use only.

Data Image



Recombinant Protein lysates were subjected to SDS PAGE followed by western blot with IL2 antibody (PMF36801) at 1 µg/ml.

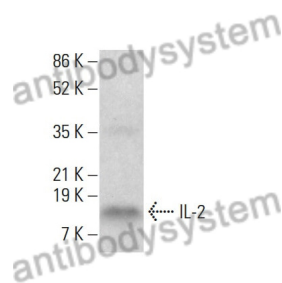
Lane 1: Recombinant protein

Second Ab: Goat Anti-Rabbit IgG H&L Polyclonal antibody, HRP (PTB96431) at 0.1 µg/mL.

Predict MW: 18 kDa

Observed MW: 18 kDa

Various lysates were subjected to SDS PAGE followed by western blot with mIL2 antibody (PMF36801) at 1 µg/ml.

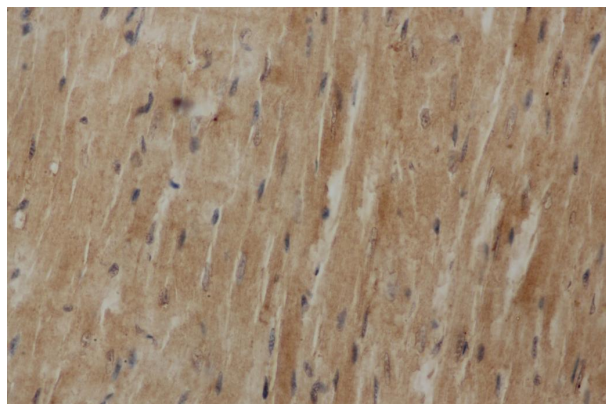


Lane 1: WEHI 231

Second Ab: Goat Anti-Rabbit IgG H&L Polyclonal antibody, HRP (PTB96431) at 0.1 µg/mL.

Predict MW: 19 kDa

Observed MW: 17 kDa



Immunohistochemical

Immunohistochemical analysis of mouse heart tissue stained for mIL2 with PMF36801.