

Anti-FTH1 Polyclonal Antibody

Summary

Catalog No.	PHC02501
Host species	Rabbit
Tested applications	ELISA: 1:4000-1:8000, IHC: 1:50-1:100, WB: 1:1000-1:4000
Species reactivity	Human, Rat
Immunogen	E. coli - derived recombinant Human FTH1 (Thr2-Ser183).
Form	Liquid
Storage buffer	0.01M PBS, pH 7.4, 50% Glycerol, 0.05% Proclin 300.
Clonality	Polyclonal
Isotype	IgG
Applications	ELISA, IHC, WB
Target	FTH, FTH1, FTHL6, Ferritin H subunit, Cell proliferation-inducing gene 15 protein, Ferritin heavy chain
Purification	Purified by antigen affinity column.
Accession	P02794
Stability and Storage	Use a manual defrost freezer and avoid repeated freeze thaw cycles. Store at 2 to 8°C for frequent use. Store at -20 to -80°C for twelve months from the date of receipt.
Note	For research use only.

Data Image



Western Blot

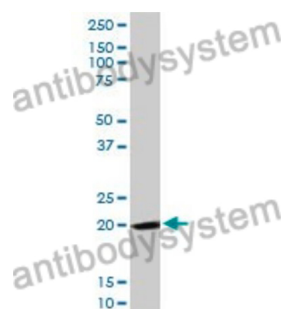
Recombinant Protein lysates were subjected to SDS PAGE followed by western blot with FTH1 antibody (PHC02501) at 1 μ g/ml.

Lane 1: Recombinant protein

Second Ab: Goat Anti-Rabbit IgG H&L Polyclonal antibody, HRP (PTB96431) at 0.1 μ g/mL.

Predict MW: 22 kDa

Observed MW: 22 kDa



Western Blot

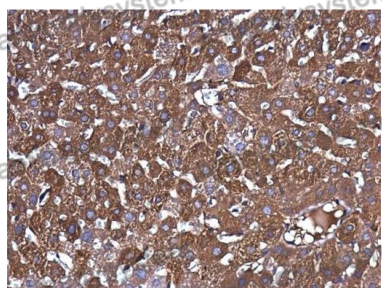
Various lysates were subjected to SDS PAGE followed by western blot with FTH antibody (PHC02501) at 1 μ g/ml.

Lane 1: RAW264.7

Second Ab: Goat Anti-Rabbit IgG H&L Polyclonal antibody, HRP (PTB96431) at 0.1 μ g/mL.

Predict MW: 21 kDa

Observed MW: 21 kDa



Immunohistochemical

Immunohistochemical analysis of mouse liver stained for FTH with PHC02501.