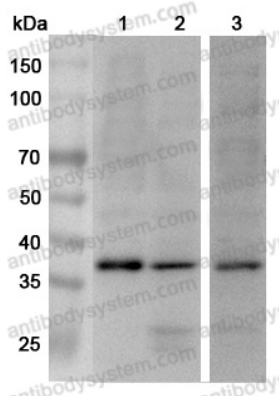


Anti-Human APOL2 Polyclonal Antibody

Summary

Catalog No.	PHJ48801
Host species	Rabbit
Tested applications	ELISA: 1:4000-1:8000, IHC: 1:50-1:100, WB: 1:1000-1:4000
Species reactivity	Human
Immunogen	E. coli - derived recombinant Human APOL2 (Gln186-Gln337).
Form	Liquid
Storage buffer	0.01M PBS, pH 7.4, 50% Glycerol, 0.05% Proclin 300.
Clonality	Polyclonal
Isotype	IgG
Applications	ELISA, IHC, WB
Target	ApoL-II, Apolipoprotein L-II, APOL2, Apolipoprotein L2
Purification	Purified by antigen affinity column.
Accession	Q9BQE5
Stability and Storage	Use a manual defrost freezer and avoid repeated freeze thaw cycles. Store at 2 to 8°C for frequent use. Store at -20 to -80°C for twelve months from the date of receipt.
Note	For research use only.

Data Image



Western Blot

Various lysates were subjected to SDS PAGE followed by western blot with APOL2 antibody (PHJ48801) at 1 μ g/ml.

Lane 1: Hela cell lysate

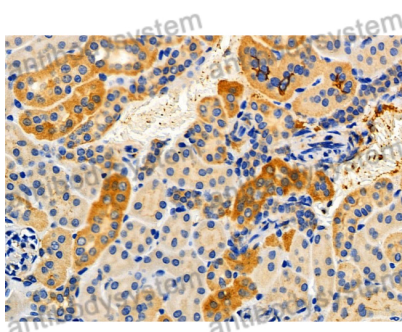
Lane 2: A549 cell lysate

Lane 3: HepG2 cell lysate

Second Ab: Goat Anti-Rabbit IgG H&L Polyclonal antibody, HRP (PTB96431) at 0.1 μ g/mL.

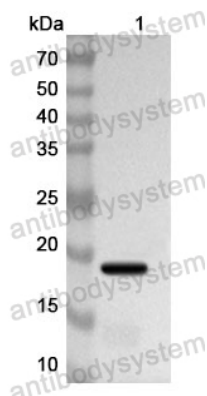
Predict MW: 37 kDa

Observed MW: 37 kDa



Immunohistochemical analysis of mouse kidney stained for APOL2 with PHJ48801.

Immunohistochemical



Western Blot

Recombinant Protein lysates were subjected to SDS PAGE followed by western blot with APOL2 antibody (PHJ48801) at 1 μ g/ml.

Lane 1: Recombinant Protein

Second Ab: Goat Anti-Rabbit IgG H&L Polyclonal antibody, HRP (PTB96431) at 0.1 μ g/mL.

Predict MW: 19 kDa

Observed MW: 19 kDa