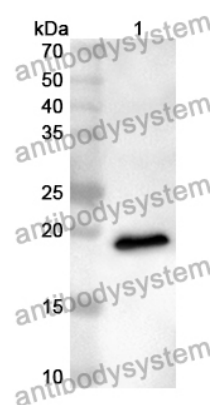


Anti-Human IL25/IL17E Polyclonal Antibody

Summary

Catalog No.	PHJ55501
Host species	Rabbit
Tested applications	ELISA: 1:4000-1:8000, IHC: 1:50-1:100, WB: 1:1000-1:4000
Species reactivity	Human
Immunogen	E. coli - derived recombinant Human IL25/IL17E (Met28-Gly177).
Form	Liquid
Storage buffer	0.01M PBS, pH 7.4, 50% Glycerol, 0.05% Proclin 300.
Clonality	Polyclonal
Isotype	IgG
Applications	ELISA, IHC, WB
Target	Interleukin-25, IL-25, IL17E, IL25, IL-17E, Interleukin-17E
Purification	Purified by antigen affinity column.
Accession	Q9H293
Stability and Storage	Use a manual defrost freezer and avoid repeated freeze thaw cycles. Store at 2 to 8°C for frequent use. Store at -20 to -80°C for twelve months from the date of receipt.
Note	For research use only.

Data Image



Western Blot

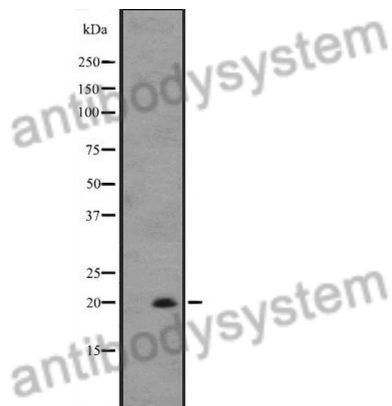
Recombinant Protein lysates were subjected to SDS PAGE followed by western blot with IL25/IL17E antibody (PHJ55501) at 1 µg/ml.

Lane 1: Recombinant protein

Second Ab: Goat Anti-Rabbit IgG H&L Polyclonal antibody, HRP (PTB96431) at 0.1 µg/mL.

Predict MW: 19 kDa

Observed MW: 19 kDa



Western Blot

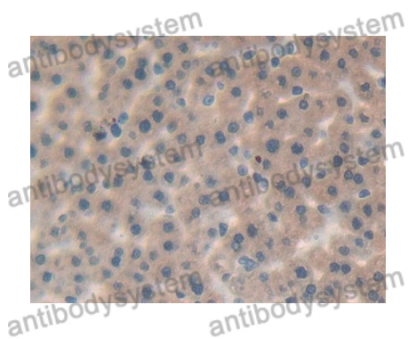
Various lysates were subjected to SDS PAGE followed by western blot with IL25 antibody (PHJ55501) at 1 µg/ml.

Lane 1: ZR-75-1

Second Ab: Goat Anti-Rabbit IgG H&L Polyclonal antibody, HRP (PTB96431) at 0.1 µg/mL.

Predict MW: 19 kDa

Observed MW: 19 kDa



Immunohistochemical

Immunohistochemical analysis of rat liver stained for IL25 with PHJ55501.