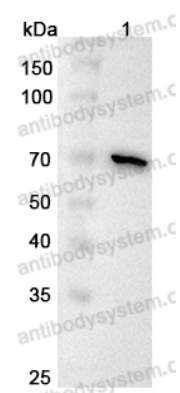


Anti-COL8A1 Polyclonal Antibody

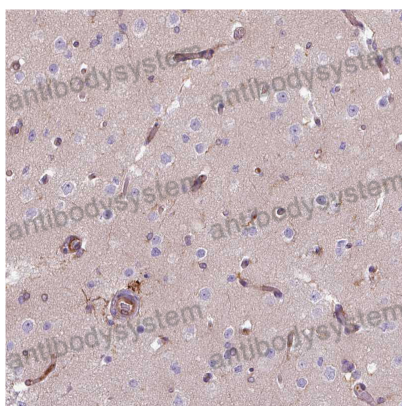
Summary

Catalog No.	PHD74601
Host species	Rabbit
Tested applications	ELISA: 1:4000-1:8000, IHC: 1:50-1:100, WB: 1:1000-1:4000
Species reactivity	Human, Mouse, Rat
Immunogen	E. coli - derived recombinant Human COL8A1 (Pro575-Pro743).
Form	Liquid
Storage buffer	0.01M PBS, pH 7.4, 50% Glycerol, 0.05% Proclin 300.
Clonality	Polyclonal
Isotype	IgG
Applications	ELISA, IHC, WB
Target	COL8A1, Endothelial collagen, C3orf7, Collagen alpha-1(VIII) chain
Purification	Purified by antigen affinity column.
Accession	P27658
Stability and Storage	Use a manual defrost freezer and avoid repeated freeze thaw cycles. Store at 2 to 8°C for frequent use. Store at -20 to -80°C for twelve months from the date of receipt.
Note	For research use only.

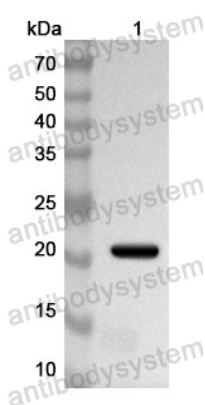
Data Image



Western Blot



Immunohistochemical



Western Blot

Various lysates were subjected to SDS PAGE followed by western blot with COL8A1 antibody (PHD74601) at 1 µg/ml.

Lane 1: HepG2 cell lysate

Second Ab: Goat Anti-Rabbit IgG H&L Polyclonal antibody, HRP (PTB96431) at 0.1 µg/mL.

Predict MW: 73 kDa

Observed MW: 73 kDa

Immunohistochemical analysis of human cerebral cortex stained for COL8A1 with PHD74601.

Recombinant Protein lysates were subjected to SDS PAGE followed by western blot with COL8A1 antibody (PHD74601) at 1 µg/ml.

Lane 1: Recombinant Protein

Second Ab: Goat Anti-Rabbit IgG H&L Polyclonal antibody, HRP (PTB96431) at 0.1 µg/mL.

Predict MW: 21 kDa

Observed MW: 21 kDa