

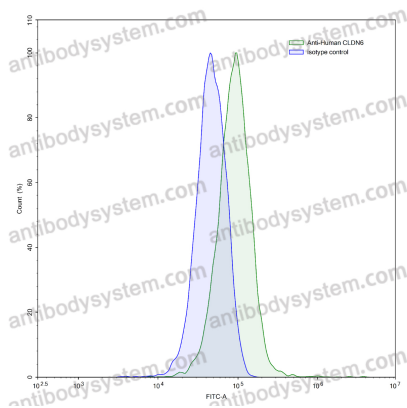
# Anti-Human CLDN6 Antibody (SAA1412)

## Summary

---

|                              |   |
|------------------------------|---|
| <b>Catalog No.</b>           | FHF19210  |
| <b>Clone ID</b>              | SAA1412   |
| <b>Host species</b>          | Human   |
| <b>Conjugation</b>           | Unconjugated  |
| <b>Species reactivity</b>    | Human   |
| <b>Form</b>                  | Liquid  |
| <b>Storage buffer</b>        | 0.01M PBS, pH 7.4.  |
| <b>Concentration</b>         | 1.9 mg/ml   |
| <b>Purity</b>                | >95% as determined by SDS-PAGE.   |
| <b>Clonality</b>             | Monoclonal  |
| <b>Isotype</b>               | IgG1, kappa   |
| <b>Applications</b>          | FCM   |
| <b>Target</b>                | Claudin-6, CLDN6, Skullin   |
| <b>Purification</b>          | Protein A/G purified from cell culture supernatant.   |
| <b>Endotoxin level</b>       | Please contact with the lab for this information.   |
| <b>Accession</b>             | P56747  |
| <b>Stability and Storage</b> | Use a manual defrost freezer and avoid repeated freeze-thaw cycles.<br>Store at 4°C short term (1-2 weeks). Store at -20°C 12 months. Store at -80°C long term. |
| <b>Note</b>                  | For research use only.  |

## Data Image



Flow-cytometry

Flow-cytometry using anti-human CLDN6 antibody. CLDN6 Transfected HI5 cells were stained with an irrelevant antibody (Blue Histogram) or an anti-human CLDN6 antibody monoclonal antibody (Catalog # FHF19210, Green Histogram) at a concentration of 5 µg/ml for 30 mins at RT. After washing, bound antibody was detected using a FITC conjugated goat anti-human antibody (Catalog # PHB96441) and cells analysed on a NovoCyte Flow Cytometer.