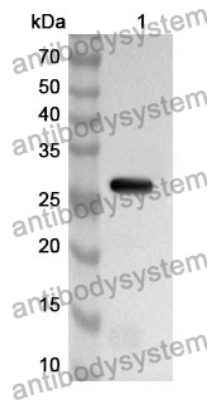


Anti-CD11a/ITGAL Polyclonal Antibody

Summary

Catalog No.	PHD41001
Host species	Rabbit
Tested applications	ELISA: 1:4000-1:8000, IHC: 1:50-1:100, WB: 1:1000-1:4000
Species reactivity	Human
Immunogen	E. coli - derived recombinant Human CD11a/ITGAL (Asn809-His1066).
Form	Liquid
Storage buffer	0.01M PBS, pH 7.4, 50% Glycerol, 0.05% Proclin 300.
Clonality	Polyclonal
Isotype	IgG
Applications	ELISA, IHC, WB
Target	CD11A,Leukocyte function-associated molecule 1 alpha chain,Leukocyte adhesion glycoprotein LFA-1 alpha chain,LFA-1A,CD11 antigen-like family member A,CD11a,ITGAL,Integrin alpha-L
Purification	Purified by antigen affinity column.
Accession	P20701
Stability and Storage	Use a manual defrost freezer and avoid repeated freeze thaw cycles. Store at 2 to 8°C for frequent use. Store at -20 to -80°C for twelve months from the date of receipt.
Note	For research use only.

Data Image



Western Blot

Recombinant Protein lysates were subjected to SDS PAGE followed by western blot with CD11a/ITGAL antibody (PHD41001) at 1 $\mu\text{g/ml}$.

Lane 1: Recombinant Protein

Second Ab: Goat Anti-Rabbit IgG H&L Polyclonal antibody, HRP (PTB96431) at 0.1 $\mu\text{g/mL}$.

Predict MW: 31 kDa

Observed MW: 31 kDa