

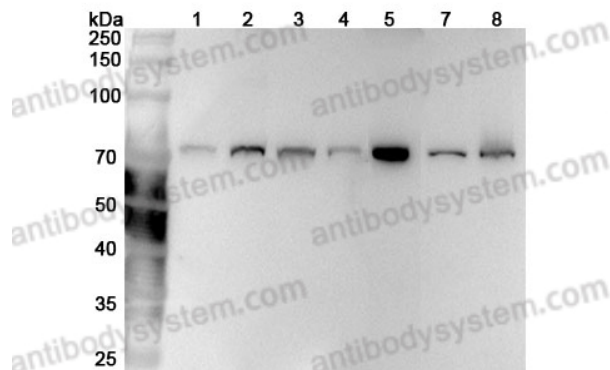
Anti-LMNB1 Polyclonal Antibody

Summary

Catalog No.	PHD40901
Host species	Rabbit
Tested applications	ELISA: 1:4000-1:8000, IHC: 1:50-1:100, WB: 1:2000-1:8000
Species reactivity	Human
Immunogen	E. coli - derived recombinant Human LMNB1 (Ala426-Glu558).
Form	Liquid
Storage buffer	0.01M PBS, pH 7.4, 50% Glycerol, 0.05% Proclin 300.
Clonality	Polyclonal
Isotype	IgG
Applications	ELISA, IHC, WB
Target	LMN2,Lamin-B1,LMNB,LMNB1
Purification	Purified by antigen affinity column.
Accession	P20700
Stability and Storage	Use a manual defrost freezer and avoid repeated freeze thaw cycles. Store at 2 to 8°C for frequent use. Store at -20 to -80°C for twelve months from the date of receipt.
Note	For research use only.

Data Image

Various lysates were subjected to SDS PAGE followed by western blot with LMNB1 antibody (PHD40901) at 1ug/mL .



WESTERN BLOT

Lane 1: Hela cell lysate
Lane 2: K562 cell lysate
Lane 3: HepG2 cell lysate
Lane 4: NIH3T3 cell lysate
Lane 5: Mouse spleen lysate
Lane 6: Rat spleen lysate
Lane 7: Rat testis lysate

Second Ab: Goat Anti-Rabbit IgG H&L Polyclonal antibody, HRP (PTB96431) at 0.1 µg/mL.

Predict MW: 67 kDa

Observed MW: 70 kDa

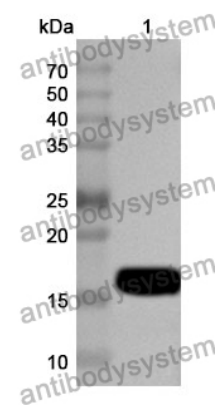
Recombinant Protein lysates were subjected to SDS PAGE followed by western blot with LMNB1 antibody (PHD40901) at 1 µg/ml.

Lane 1: Recombinant protein

Second Ab: Goat Anti-Rabbit IgG H&L Polyclonal antibody, HRP (PTB96431) at 0.1 µg/mL.

Predict MW: 17 kDa

Observed MW: 17 kDa



WESTERN BLOT